

General Information

Location: CATANIA ITA
ICAO/IATA: LICC / CTA
Lat/Long: N37° 28.0', E015° 03.8'
Elevation: 39 ft

Airport Use: Public
Daylight Savings: Observed
UTC Conversion: -1:00 = UTC
Magnetic Variation: 2.0° E

Fuel Types: Jet A-1
Repair Types: Minor Airframe, Minor Engine
Customs: Yes
Airport Type: IFR
Landing Fee: Yes
Control Tower: Yes
Jet Start Unit: No
LLWS Alert: No
Beacon: Yes

Sunrise: 0603 Z
Sunset: 1624 Z

Runway Information

Runway: 08
Length x Width: 7992 ft x 148 ft
Surface Type: asphalt
TDZ-Elev: 38 ft
Lighting: Edge, ALS, Centerline, REIL
Displaced Threshold: 315 ft

Runway: 26
Length x Width: 7992 ft x 148 ft
Surface Type: asphalt
TDZ-Elev: 18 ft
Lighting: Edge, ALS, Centerline, REIL
Displaced Threshold: 282 ft

Communication Information

ATIS: 127.675
Catania Tower: 118.700
Catania Ground: 129.725
Catania Approach: 119.250
Catania Direct (Approach Control Radar): 120.800
Catania Radar: 119.250

LICC/CTA
FONTANAROSSA

JEPPESEN

13 MAY 16

10-1P

Eff 26 May

CATANIA, ITALY
AIRPORT BRIEFING

1. GENERAL

1.1. ATIS

ATIS 127.675

1.2. TAXI PROCEDURES

Turn back manoeuvres must be performed on RWY heads.

In order to avoid damage due to jet blast or slip stream, pilots are requested to taxi with MIM thrust.

1.3. PARKING INFORMATION

Power-back manoeuvres on apron are forbidden, except prior agreement.

On stands 301 thru 326 and 333 thru 339 push-back required.

Self-maneuvring available on stands 337 thru 339 under marshalling supervision and only if tow bar is not provided by handlers.

Self-maneuvring available on stands 100 thru 104, 300 and 302.

Stands 100 thru 104 available DAY only.

1.4. OTHER INFORMATION

1.4.1. GENERAL

Area of magnetic abnormality.

Helicopter activity.

Birds.

ATS not assured within 13° splay sector originated at Control Tower from 051°-064° due to partial limitation of visibility caused by opposite building.

RWY 08 right-hand circuit.

1.4.2. CONTINGENCY PROCEDURES IN CASE OF VOLCANIC ASH CLOUD

For volcanic ash cloud sectors and associated restrictions refer to 10-1Q & 10-1Q1 charts.

2. ARRIVAL

2.1. TAXI PROCEDURES

Unless otherwise instructed by ATC, ACFT shall vacate RWY after landing as follows:

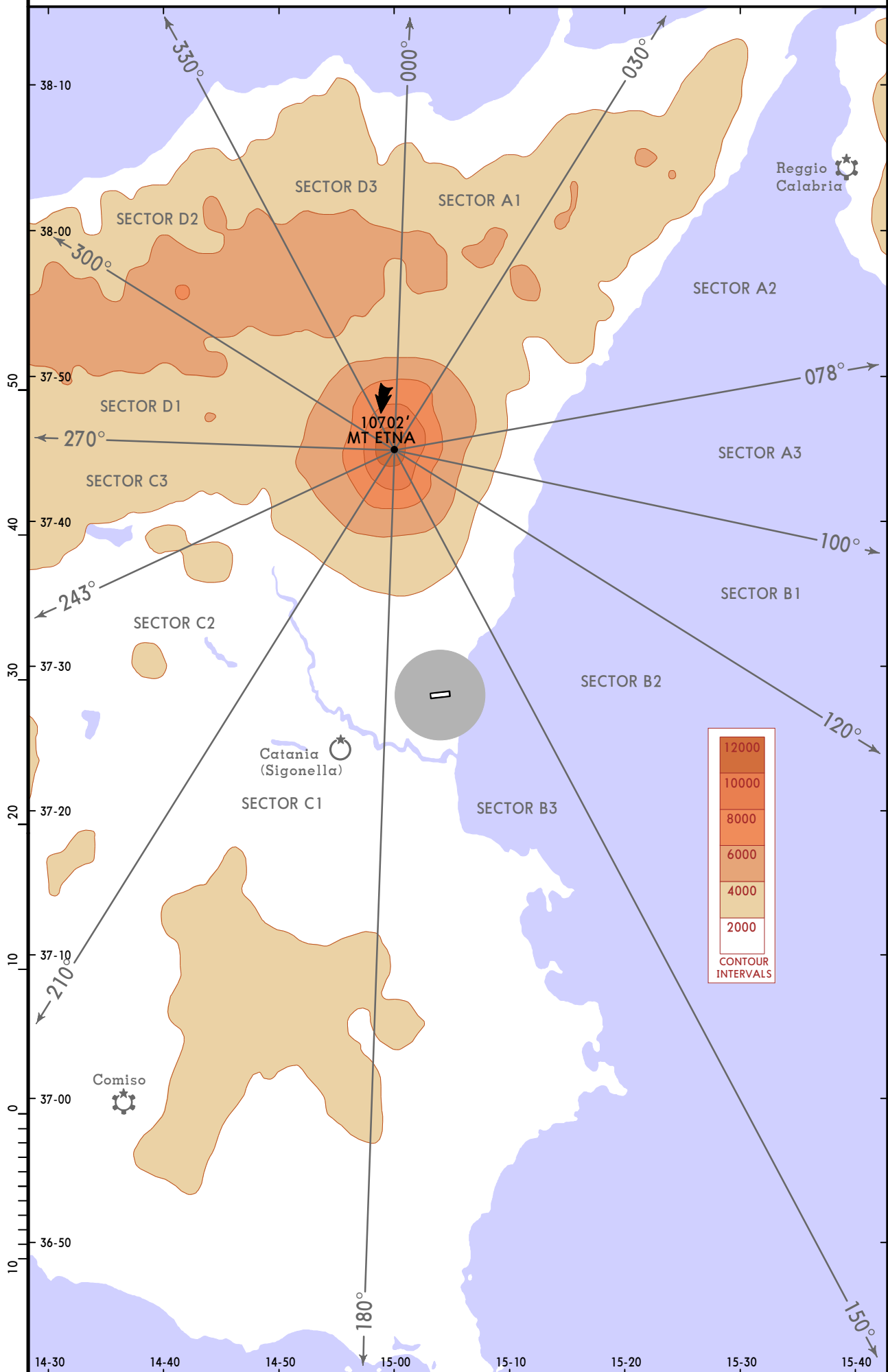
- RWY 08 via TWY F or G;
- RWY 26 via TWY A or B.

LICC/CTA
FONTANAROSSA

JEPPESEN
11 NOV 16 10-1Q

CATANIA, ITALY
OVERVIEW

ASH CLOUD SECTORS



CHANGES: None.

© JEPPESEN, 2014. ALL RIGHTS RESERVED.

ASH CLOUD SECTORS TEXT

FLIGHT CONTINGENCY PROCEDURES IN CASE OF VOLCANIC ASH CLOUD

In order to prevent dangerous effects on the safety of ACFT ops to/from Catania Fontanarossa AD, both in flight and on the ground, due to the presence of volcanic ash cloud during the eruption of Etna, the airspace of Catania CTR has been divided in sectors, in order to specify instrument procs avbl when a sector (or more than one) is/are interdicted for flight ops.

REMARK

Due to the impossibility to determinate alt direction and/or density of volcanic ash cloud due to variability of the met conditions, all flights within Catania CTR must be conducted with max attention. All crew will use max caution in order to avoid any contact with mentioned phenomena. Unexpected variations as per direction alt and/or density of the cloud should be carefully considered taking into account proper issued SIGMET.

DIVISION OF AIRSPACE

To ensure a flexible management of the airspace concerned and of the relevant traffic, the airspace within which the volcanic phenomena will be analysed is defined by lateral and vertical limits of Catania CTR and by sectors (with extent not homogeneous) having origin on coords N 37 44.9 E 015 00.0.

OPERATIONAL LIMITATIONS

Depending on sector/s affected, STAR, SID and IAP are avbl as below described (if two or more sectors are interdicted to flight ops, the most restrictive provision will be applied):

- a) Ash cloud in SECTOR A1
Procedures and holding normally available
- b) Ash cloud in SECTOR A2
STAR NATOV 1F/1G/1M/1L, DIVAR 1F/1G/1L suspended
IAP available
SID RCA 6A/6B, PIMOR 6A/6B/6F, PEKOD 5A/5B suspended
Holding available
- c) Ash cloud in SECTOR A3
STAR NATOV 1F/1G/1M/1L, PIMOR 1F/1G/1M/1L/1P/1S/1R, DIVAR 1F/1G/1L suspended
IAP available
SID RCA 6A/6B, PIMOR 6A/6B/6F, PEKOD 5A/5B suspended
Holding available
- d) Ash cloud in SECTOR B1
STAR ERNAM 1F/1G/1M/1L, COBBA 2M, LIBRO2M/1R, NELDA2M/1R, NATOV 1F/1G/1M/1L,
PIMOR 1F/1G/1M/1L/1P/1S/1R, DIVAR 1F/1G/1L suspended
IAP suspended except NDB RWY 08, VOR-Z or NDB RWY 26, ILS or LOC-Y RWY 08, VOR-Y RWY 08
SID suspended except LIBRO 6A/6B, NELDA 7A/7B, ERNAM 6E/6F
Holding INDAX suspended
- e) Ash cloud in SECTOR B2
STAR suspended except COBBA 1F/1G, NELDA 1F/1G/1P/1S, LIBRO 1F/1G/1P/1S
IAP suspended except ILS or LOC-Y RWY 08, VOR Y RWY 08
SID suspended except LIBRO 6B, NELDA 7B
Holding INDAX, CTF VOR/NDB RWY 08/26 suspended
- f) Ash cloud in SECTOR B3
STAR ERNAM 1F/1G/1L, PIMOR 1F/1G/1L/1P/1S, NATOV 1F/1G/1L, DIVAR 1F/1G/1L, COBBA 2M/1L,
LIBRO 2M/1L/1R, NELDA 2M/1L/1R suspended
IAP all procedures suspended
SID all procedures suspended
Holding CTF VOR/NDB RWY 08/26 suspended
- g) Ash cloud in SECTOR C1
STAR suspended except ERNAM 1M, PIMOR 1M/1R, NATOV 1M
IAP all procedures suspended
SID suspended except following: PIMOR 6A, RCA 6A, PEKOD 5A, ERNAM 6B/6E
Holding suspended except INDAX
- h) Ash cloud in SECTOR C2
STAR COBBA 1F/1G/2M/1L, LIBRO 1F/1G/2M/1L/1P/1S/1R, NELDA 1F/1G/2M/1L/1P/1S/1R,
ERNAM 1F/1G, PIMOR 1F/1G/1P/1S, NATOV 1F/1G, DIVAR 1F/1G suspended
IAP suspended except VOR-W RWY 26, VOR-X RWY 26
SID ERNAM 6A, NELDA 7A/7B, LIBRO 6A/6B, RCA 6B, PIMOR 6B, PEKOD 5B suspended
Holding suspended except INDAX, CTF VOR/NDB RWY 08
- i) Ash cloud in SECTOR C3
STAR COBBA 1F/1G/2M/1L, LIBRO 1F/1G/2M/1L/1P/1S/1R suspended
IAP VOR-Y RWY 26 suspended
SID LIBRO 6A/6B suspended
Holding Missed approach holding VOR-Y RWY 26 suspended
- j) Ash cloud in SECTOR D1
STAR COBBA 1F/1G/2M/1L suspended
IAP available
SID available
Holding available
- k) Ash cloud in SECTOR D2
STAR COBBA 1F/1G/2M/1L suspended
IAP available
SID available
Holding available
- l) Ash cloud in SECTOR D3
Procedures and holding normally available

AREA

CATANIA
ITALY**10-1VA** 23 OCT 15 **JEPPESEN****Catania CTR**

All VFR flights shall contact Catania APP on visual REPs shown on 10-1V to receive clearance to enter Catania CTR, except arriving traffic to Catania (Fontanarossa) AD via PATERNO' (CCN1) and NORD EST ACIREALE (CCNE1). Such traffic shall request clearance to join Catania (Fontanarossa) traffic circuit to Catania TWR. Pilots may be requested to hold over such points due to traffic in progress within Catania CTR and/or Catania ATZ.

Unless otherwise cleared VFR traffic within Catania CTR 1 shall follow routes and altitudes shown on 10-1V.

Traffic to/from South**Inbound Traffic**

- Inbound traffic shall contact Sigonella TWR over VIZZINI (CZS1) to receive clearance to enter Catania CTR 1 and follow VFR compulsory routes to Catania (Fontanarossa) AD.
- Pilots will be instructed to contact Catania TWR before leaving FOCE DEL SIMETO (CCS3) to join the traffic circuit of Catania (Fontanarossa) AD, if not otherwise instructed by Sigonella TWR.
- NOTE: Holdings may be requested SE of FOCE DEL SIMETO (CCS3).

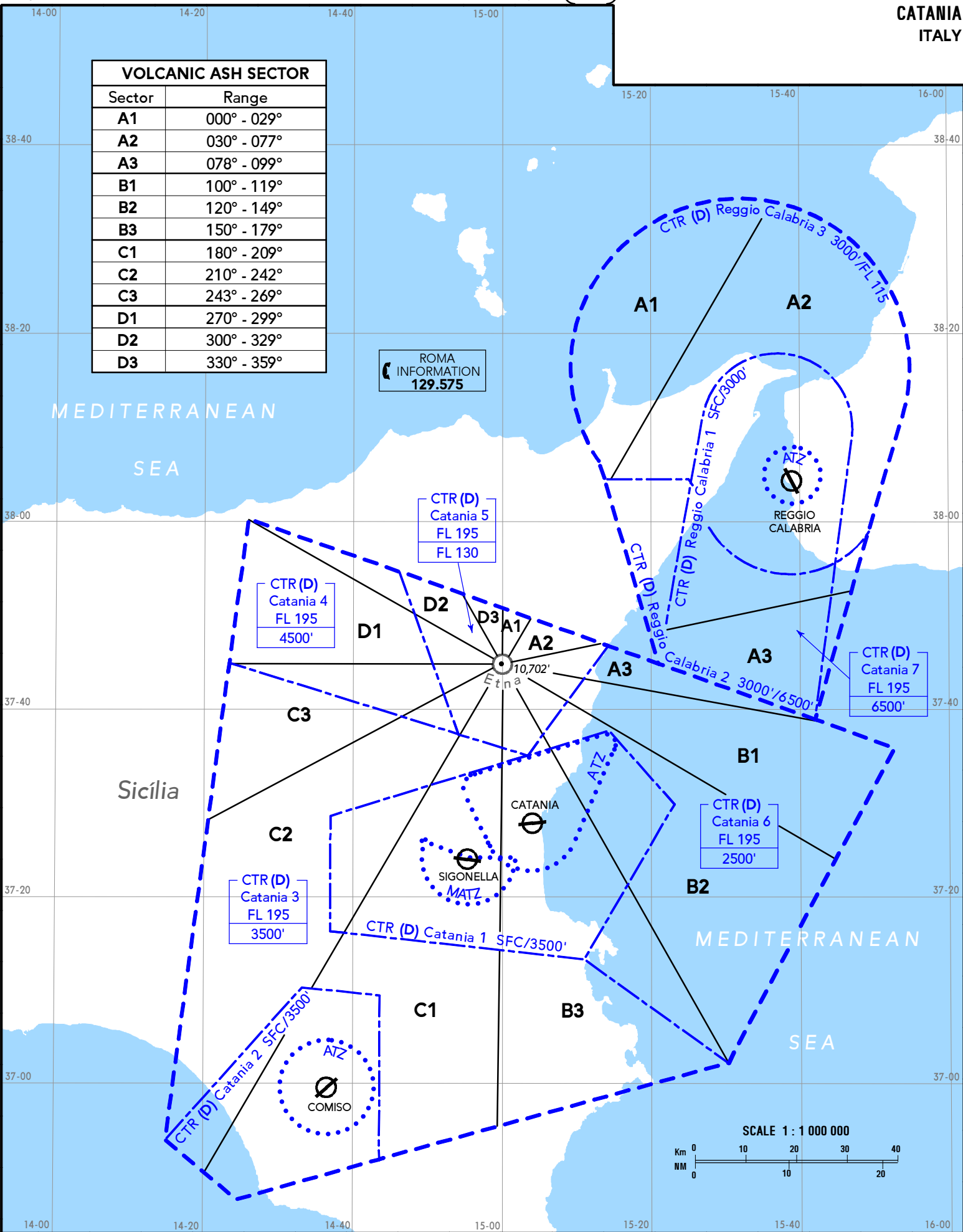
Outbound Traffic

- Pilots will be instructed to establish and maintain radio contact with Sigonella TWR before crossing FOCE DEL SIMETO (CCS3), to receive clearance to cross extended Catania (Sigonella) RWY centreline.
- Pilots shall maintain radio contact with Sigonella TWR to leave Catania CTR bound to VIZZINI (CZS1) unless otherwise instructed by Sigonella TWR after coordination with Catania APP.

Comiso AD

Traffic to/from Comiso AD may be subject to delay in presence of unmanned aircraft activity. Contingency procedures will be applied on tactical basis by Catania APP.

VOLCANIC ASH SECTOR	
Sector	Range
A1	000° - 029°
A2	030° - 077°
A3	078° - 099°
B1	100° - 119°
B2	120° - 149°
B3	150° - 179°
C1	180° - 209°
C2	210° - 242°
C3	243° - 269°
D1	270° - 299°
D2	300° - 329°
D3	330° - 359°



ROMA
INFORMATION
129.575

CTR (D)
Catania 5
FL 195
FL 130

CTR (D)
Catania 4
FL 195
4500'

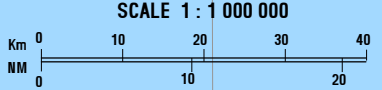
CTR (D)
Catania 7
FL 195
6500'

CTR (D)
Catania 6
FL 195
2500'

CTR (D)
Catania 3
FL 195
3500'

CTR (D) Catania 2 SFC/3500'

CTR (D) Catania 1 SFC/3500'



VOLCANIC ASH CLOUD SECTORS

CATANIA

10-1WA 16 JAN 15

JEPPESEN

ITALY

Flight contingency procedures in case of Volcanic Ash Cloud

In order to prevent dangerous effects on the safety of operations of ACFT, both in flight and on the ground, due to the presence of volcanic ash cloud during the eruption of Etna, the airspace of Catania and Reggio Calabria CTRs has been divided in sectors, in order to specify instrument procedures available when a sector (or more than one) is/are interdicted for flight operations.

Due to the impossibility to determinate altitude, direction and/or density of volcanic ash cloud due to variability of the meteorological conditions, all flights must be conducted with MAX attention. All crew will use MAX caution in order to avoid any contact with mentioned phenomena. Unexpected variations as per altitude, direction and/or density of the cloud should be carefully considered taking into account proper issued SIGMET.

VFR traffic is not allowed both within interdicted sector/s and in the airspace underneath. Remaining VFR traffic, both for safety reasons due to presence of the volcanic ash cloud and for the consequent particular managing of IFR traffic within the CTR, may be subject to limitations or delays.

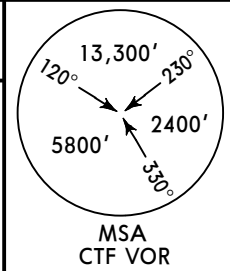
Such procedures, when applicable, are activated by NOTAM.

LICC/CTA
FONTANAROSSA

JEPPESEN
8 APR 16 10-2

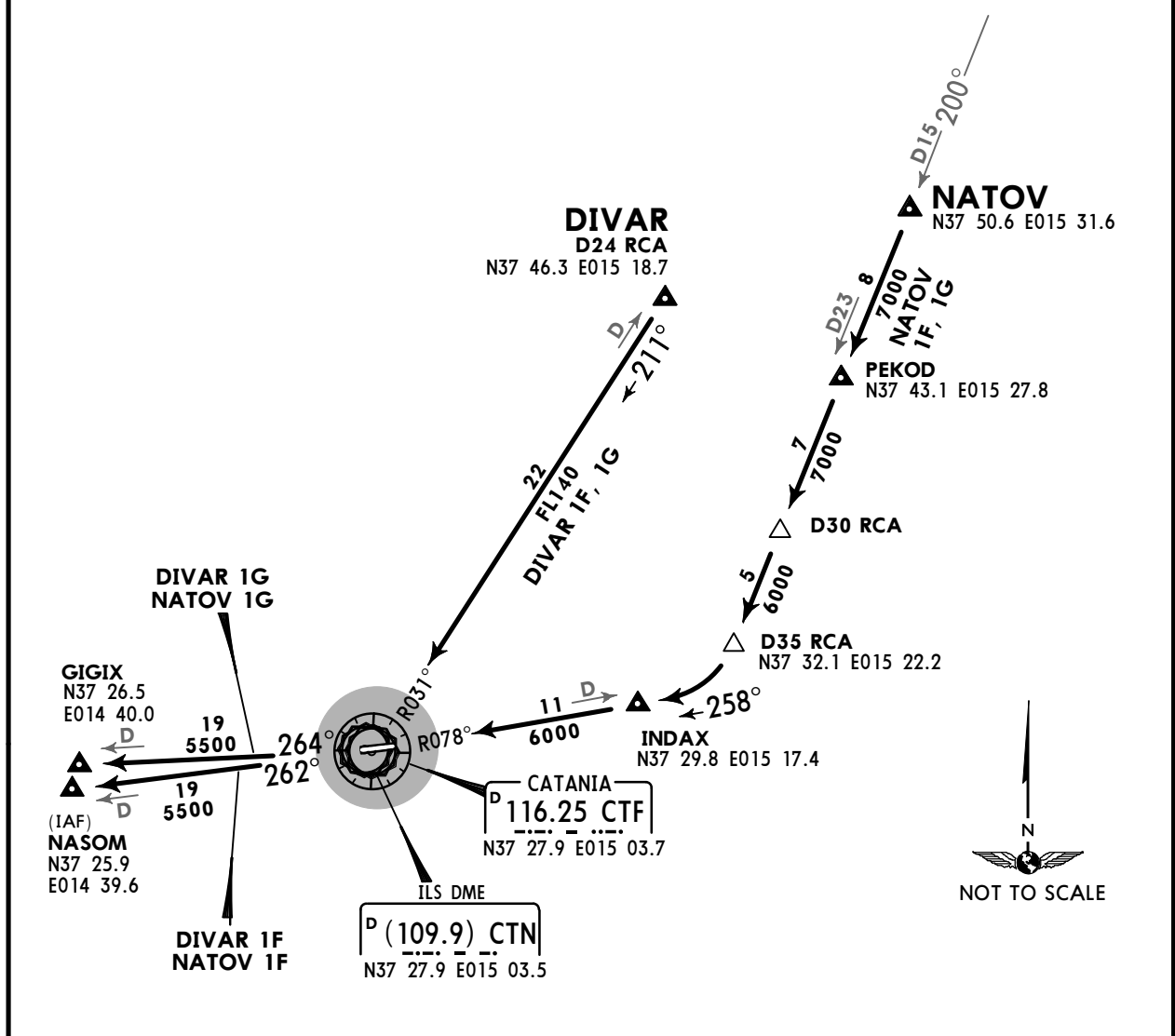
CATANIA, ITALY
STAR

ATIS 127.675	Apt Elev 39'	Alt Set: hPa Trans level: By ATC Trans alt: 7000'
-----------------	-----------------	--



DIVAR 1F [DIVA1F] ①, DIVAR 1G [DIVA1G] ①
NATOV 1F [NATO1F], NATOV 1G [NATO1G]
RWY 08 ARRIVALS
BASED ON CTF VOR
DME REQUIRED

① By ATC.



HOLDINGS OVER		
GIGIX 	INDAX 	NASOM

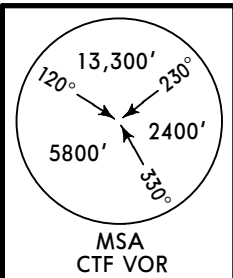
STAR	ROUTING
DIVAR 1F	On CTF R-031 inbound to CTF, CTF R-262 to NASOM.
DIVAR 1G	On CTF R-031 inbound to CTF, CTF R-264 to GIGIX.
NATOV 1F	On RCA R-200 via PEKOD to D35 RCA, turn RIGHT, intercept CTF R-078 inbound via INDAX to CTF, CTF R-262 to NASOM.
NATOV 1G	On RCA R-200 via PEKOD to D35 RCA, turn RIGHT, intercept CTF R-078 inbound via INDAX to CTF, CTF R-264 to GIGIX.

CHANGES: ATIS commissioned.

LICC/CTA
FONTANAROSSA

JEPPESEN
8 APR 16 (10-2A)

CATANIA, ITALY
STAR



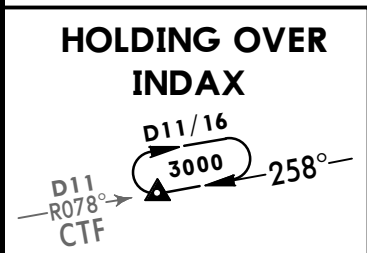
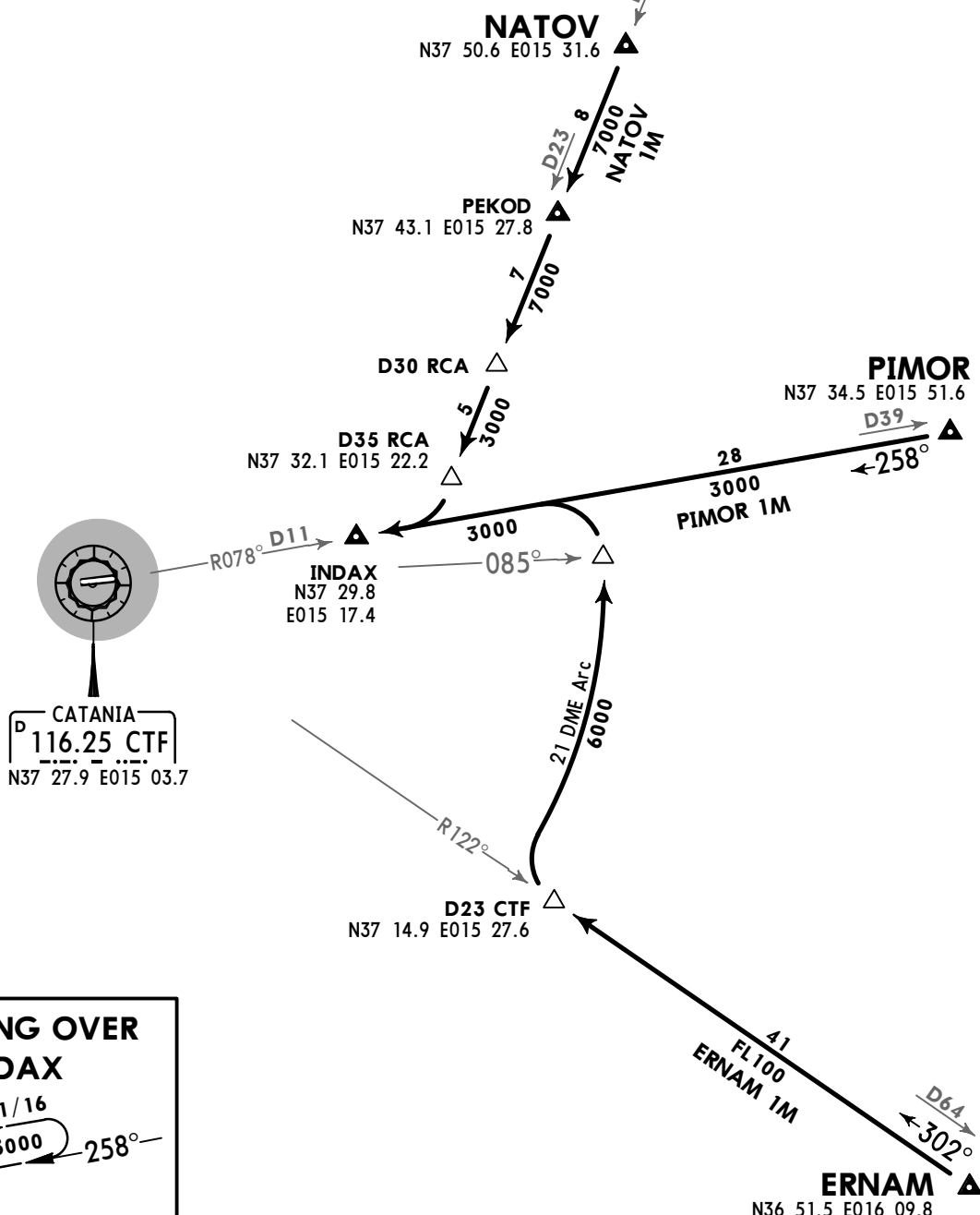
ATIS 127.675	Apt Elev 39'	Alt Set: hPa Trans level: By ATC	Trans alt: 7000'
-----------------	-----------------	-------------------------------------	------------------

**ERNAM 1M [ERNA1M] ①, NATOV 1M [NATO1M]
PIMOR 1M [PIMO1M]
RWY 26 ARRIVALS
BASED ON CTF VOR
DME REQUIRED**

① STAR partially outside controlled airspace.



REGGIO CALABRIA
D 111.0 RCA
N38 04.6 E015 38.7



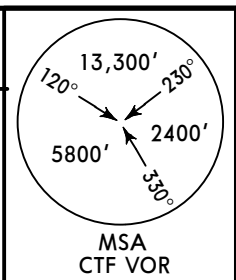
STAR	ROUTING
ERNAM 1M	On CTF R-122 inbound to D23 CTF, turn RIGHT, along CTF 21 DME arc, when passing CTF R-085 turn LEFT, intercept CTF R-078 inbound to INDAX.
NATOV 1M	On RCA R-200 via PEKOD to D35 RCA, turn RIGHT, intercept CTF R-078 inbound to INDAX.
PIMOR 1M	On CTF R-078 inbound to INDAX.

LICC/CTA
FONTANAROSSA

JEPPESEN
8 APR 16 (10-2B)

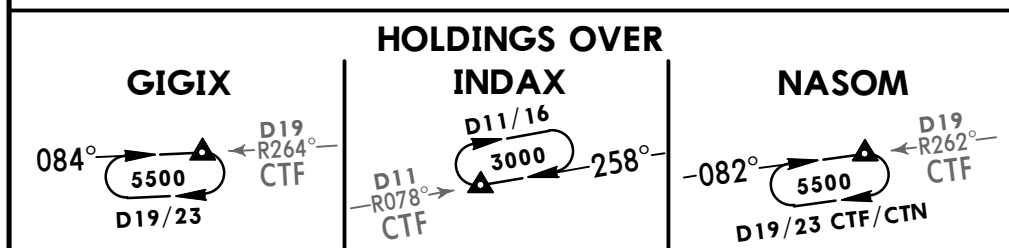
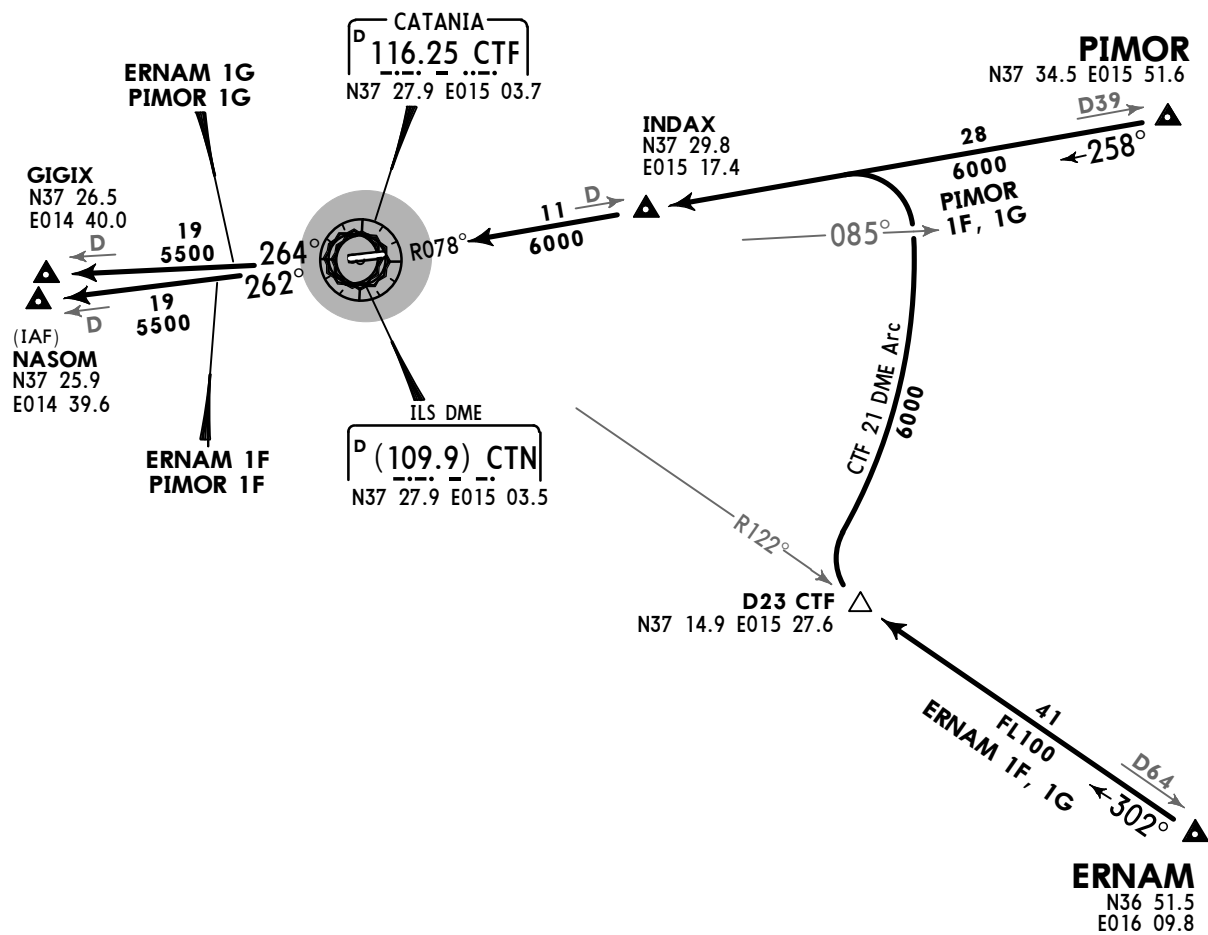
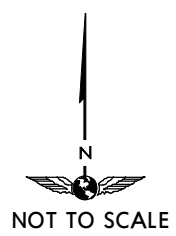
CATANIA, ITALY
STAR

ATIS 127.675	Apt Elev 39'	Alt Set: hPa Trans level: By ATC Trans alt: 7000'
-----------------	-----------------	--



ERNAM 1F [ERNA1F] **①**, ERNAM 1G [ERNA1G] **①**
PIMOR 1F [PIMO1F], PIMOR 1G [PIMO1G]
RWY 08 ARRIVALS
BASED ON CTF VOR
DME REQUIRED

① STAR partially outside controlled airspace.



STAR	ROUTING
ERNAM 1F	On CTF R-122 inbound to D23 CTF, turn RIGHT, along CTF 21 arc, when passing CTF R-085 turn LEFT, intercept CTF R-078 inbound via INDAX to CTF, CTF R-262 to NASOM.
ERNAM 1G	On CTF R-122 inbound to D23 CTF, turn RIGHT, along CTF 21 arc, when passing CTF R-085 turn LEFT, intercept CTF R-078 inbound via INDAX to CTF, CTF R-264 to GIGIX.
PIMOR 1F	On CTF R-078 inbound via INDAX to CTF, CTF R-262 to NASOM.
PIMOR 1G	On CTF R-078 inbound via INDAX to CTF, CTF R-264 to GIGIX.

LICC/CTA
FONTANAROSSA

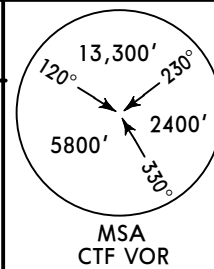
JEPPESEN
8 APR 16 (10-2C)

CATANIA, ITALY
STAR

ATIS
127.675

Apt Elev
39'

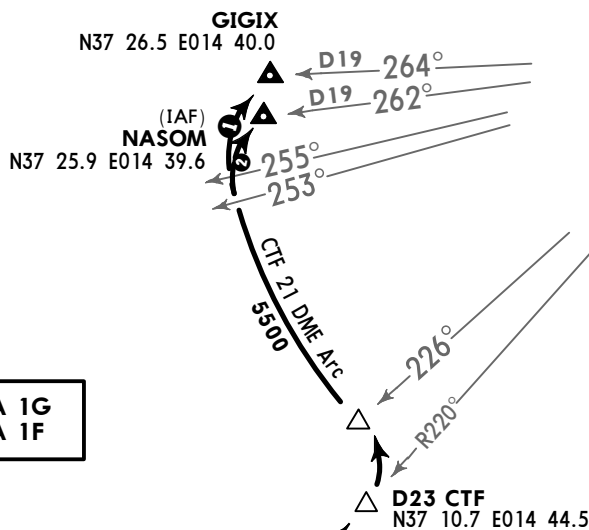
Alt Set: hPa
Trans level: By ATC Trans alt: 7000'



NELDA 1F [NELD1F], NELDA 1G [NELD1G]
RWY 08 ARRIVALS
BASED ON CTF VOR
DME REQUIRED

ILS DME
D (109.9) CTN
N37 27.9 E015 03.5

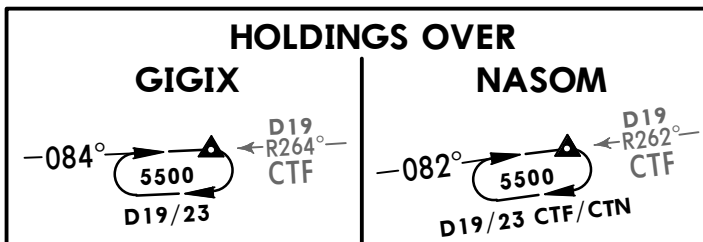
CATANIA
D 116.25 CTF
N37 27.9 E015 03.7



- 1 NELDA 1G
- 2 NELDA 1F



NELDA
N36 51.8
E014 23.6

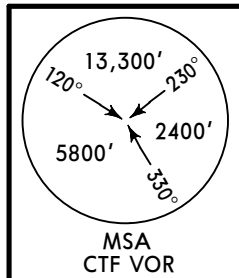


STAR	ROUTING
NELDA 1F	On CTF R-220 inbound to D23 CTF, turn LEFT, along CTF 21 DME arc, when passing CTF R-253 turn RIGHT, intercept CTF R-262 inbound to NASOM.
NELDA 1G	On CTF R-220 inbound to D23 CTF, turn LEFT, along CTF 21 DME arc, when passing CTF R-255 turn RIGHT, intercept CTF R-264 inbound to GIGIX.

LICC/CTA
FONTANAROSSA

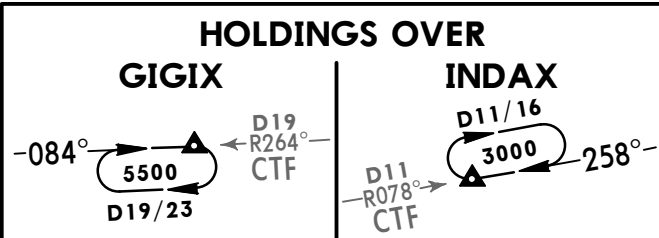
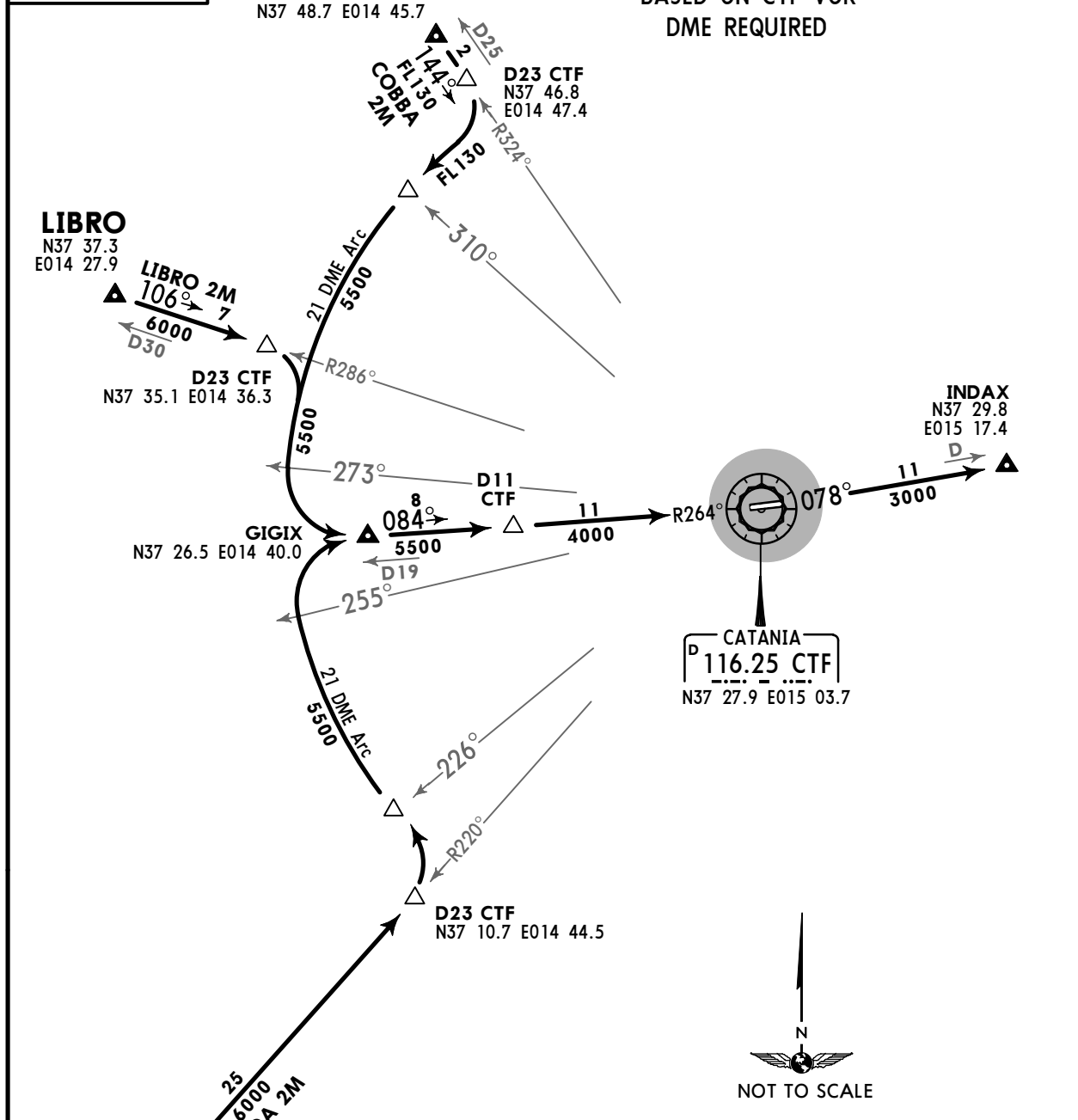
JEPPESEN
8 APR 16 10-2D

CATANIA, ITALY
STAR



ATIS 127.675
Apt Elev 39'
Alt Set: hPa
Trans level: By ATC Trans alt: 7000'

**COBBA 2M [COBA2M], LIBRO 2M [LIBR2M]
NELDA 2M [NELD2M]
RWY 26 ARRIVALS
BASED ON CTF VOR
DME REQUIRED**



STAR	ROUTING
COBBA 2M	On CTF R-324 inbound to D23 CTF, turn RIGHT, along CTF 21 DME arc, when passing CTF R-273 turn LEFT, intercept CTF R-264 inbound via GIGIX to CTF, CTF R-078 to INDAX.
LIBRO 2M	On CTF R-286 inbound to D23 CTF, turn RIGHT, along CTF 21 DME arc, when passing CTF R-273 turn LEFT, intercept CTF R-264 inbound via GIGIX to CTF, CTF R-078 to INDAX.
NELDA 2M	On CTF R-220 inbound to D23 CTF, turn LEFT, along CTF 21 DME arc, when passing CTF R-255 turn RIGHT, intercept CTF R-264 inbound via GIGIX to CTF, CTF R-078 to INDAX.

LICC/CTA
FONTANAROSSA

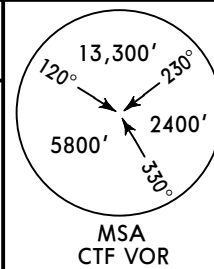
JEPPESEN
8 APR 16 (10-2E)

CATANIA, ITALY
STAR

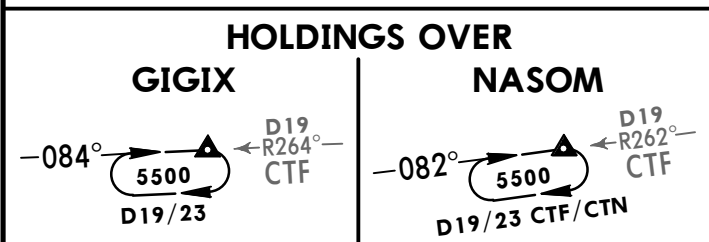
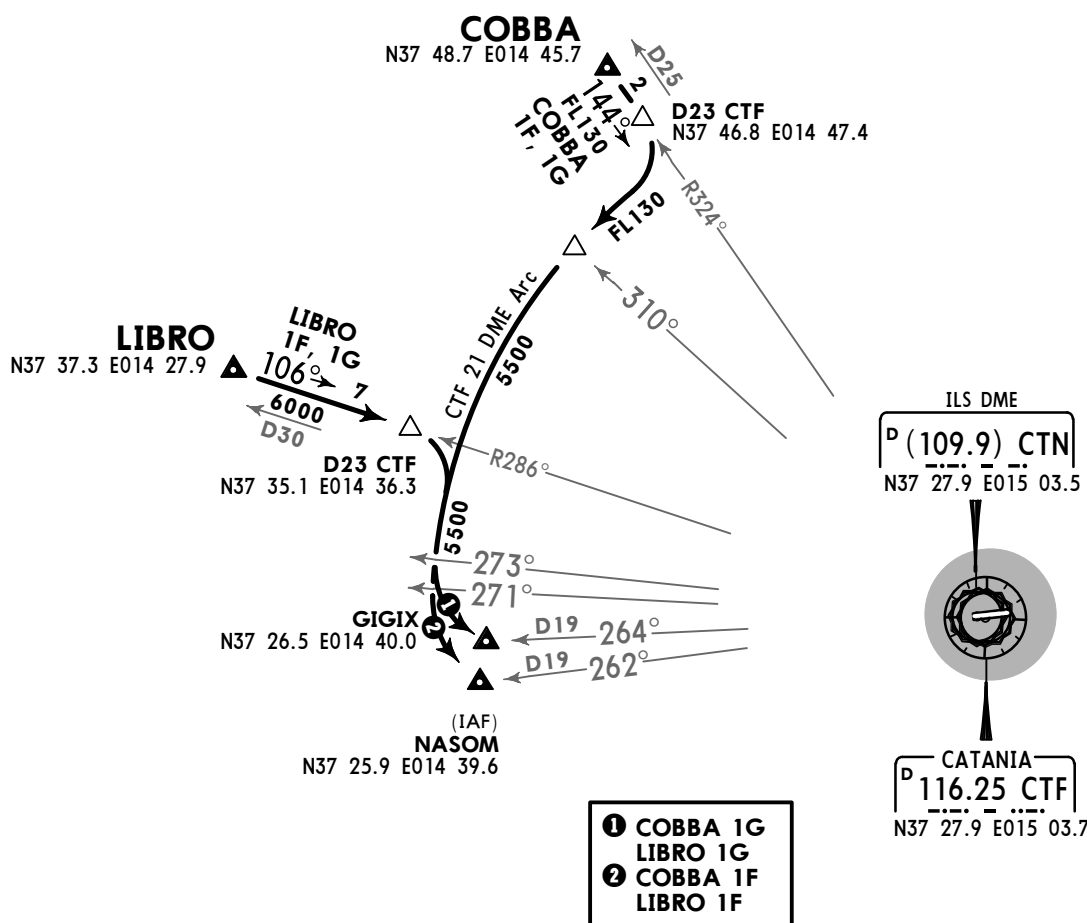
ATIS
127.675

Apt Elev
39'

Alt Set: hPa
Trans level: By ATC Trans alt: 7000'



COBBA 1F [COBA1F], COBBA 1G [COBA1G]
LIBRO 1F [LIBR1F], LIBRO 1G [LIBR1G]
RWY 08 ARRIVALS
BASED ON CTF VOR
DME REQUIRED

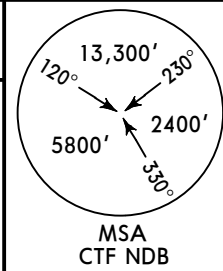


STAR	ROUTING
COBBA 1F	On CTF R-324 inbound to D23 CTF, turn RIGHT, along CTF 21 DME arc, when passing CTF R-271 turn LEFT, intercept CTF R-262 inbound to NASOM.
COBBA 1G	On CTF R-324 inbound to D23 CTF, turn RIGHT, along CTF 21 DME arc, when passing CTF R-273 turn LEFT, intercept CTF R-264 inbound to GIGIX.
LIBRO 1F	On CTF R-286 inbound to D23 CTF, turn RIGHT, along CTF 21 DME arc, when passing CTF R-271 turn LEFT, intercept CTF R-262 inbound to NASOM.
LIBRO 1G	On CTF R-286 inbound to D23 CTF, turn RIGHT, along CTF 21 DME arc, when passing CTF R-273 turn LEFT, intercept CTF R-264 inbound to GIGIX.

LICC/CTA
FONTANAROSSA

CATANIA, ITALY
STAR

ATIS 127.675	Apt Elev 39'	Alt Set: hPa Trans level: By ATC Trans alt: 7000'
-----------------	-----------------	--



DIVAR 1L [DIVA1L] ①, ERNAM 1L [ERNA1L] ②
NATOV 1L [NATO1L], PIMOR 1L [PIMO1L]
RWYS 08, 26 ARRIVALS
 BASED ON CTF NDB/VOR
 DME REQUIRED

HOLDINGS OVER CTF

Runway 08

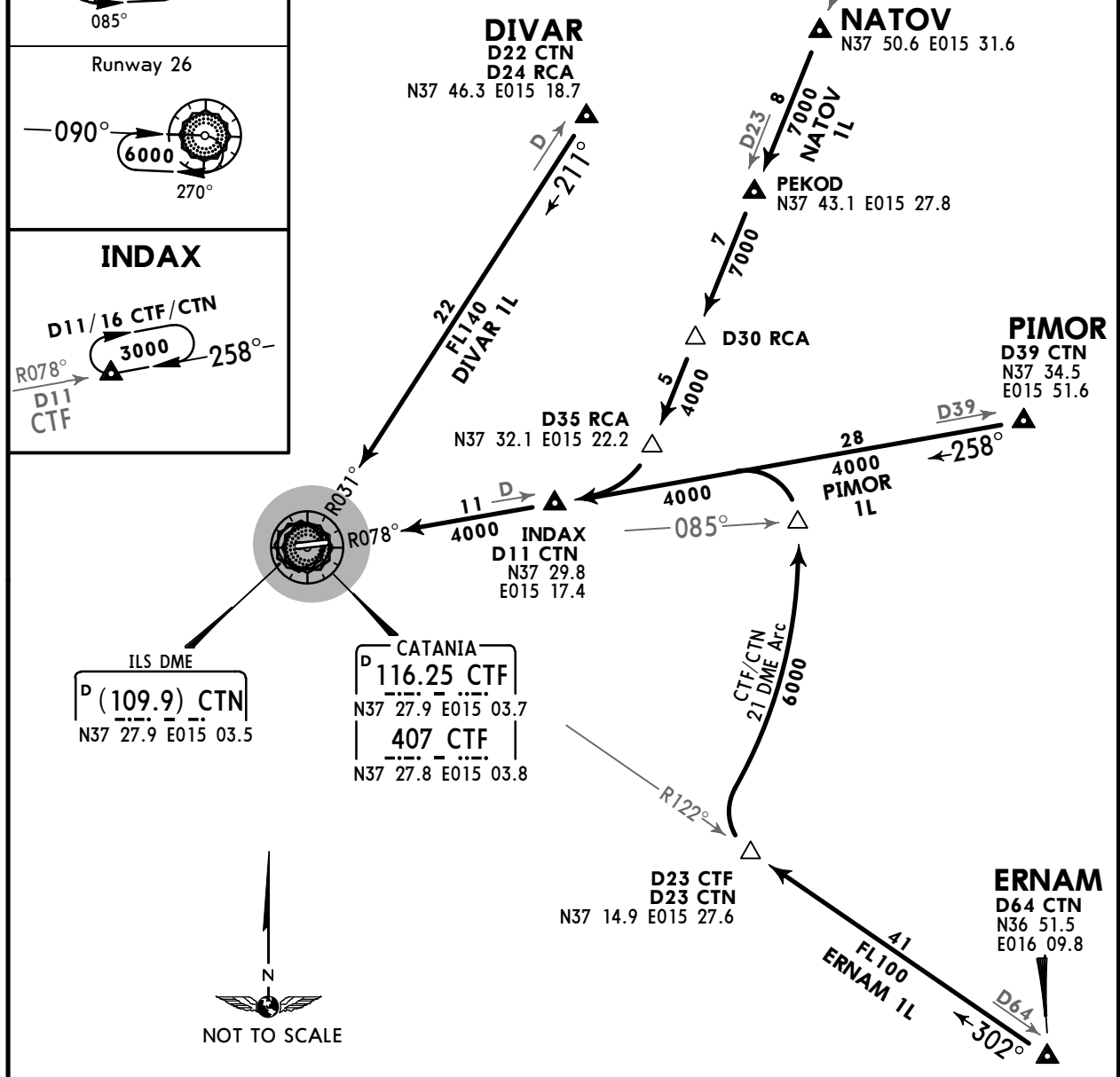
Runway 26

INDAX

D11/16 CTF/CTN

① By ATC.
 ② STAR partially outside controlled airspace.

REGGIO CALABRIA
 D 111.0 RCA
 N38 04.6 E015 38.7

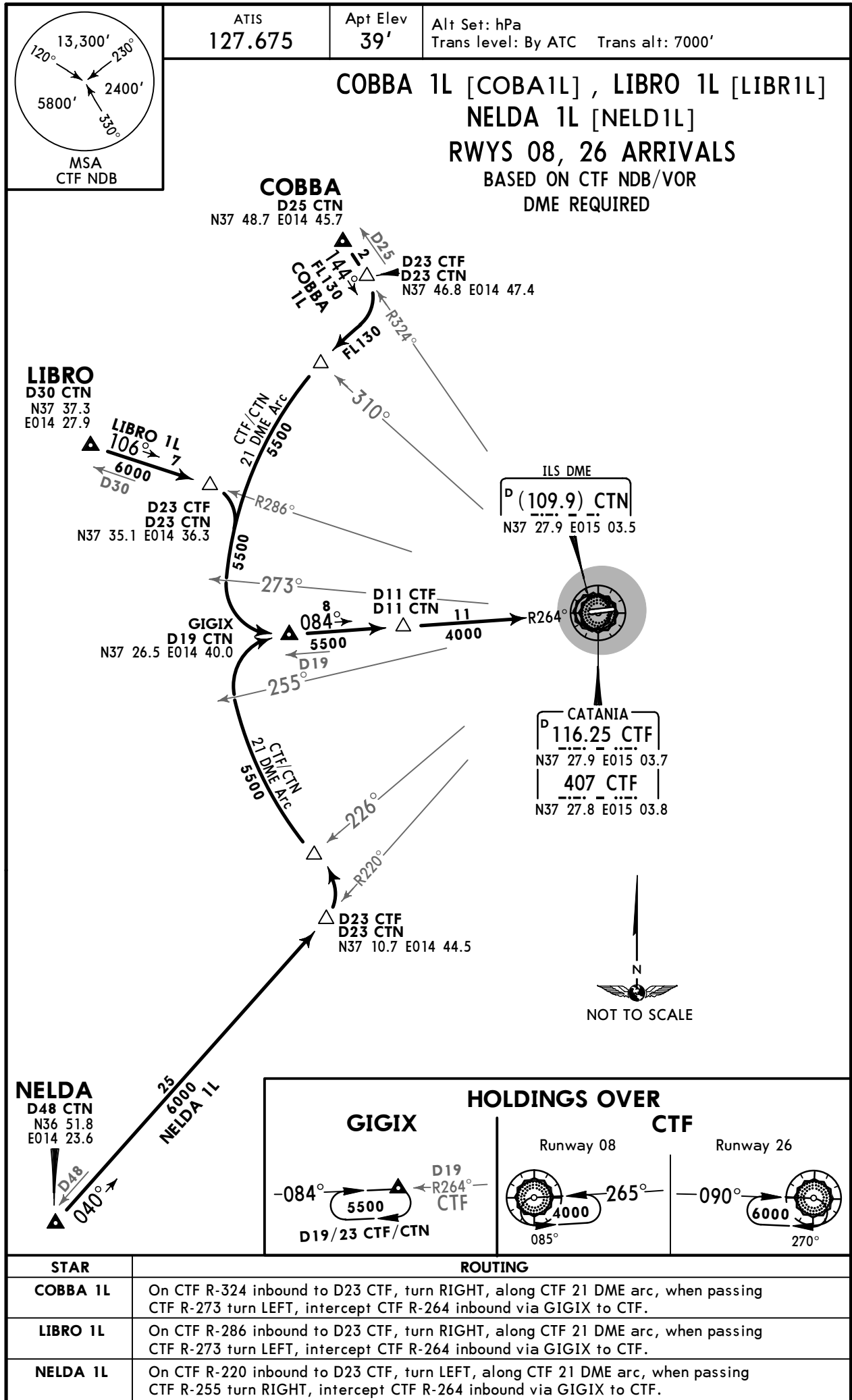


STAR	ROUTING
DIVAR 1L	On CTF R-031 inbound to CTF.
ERNAM 1L	On CTF R-122 inbound to D23 CTF, turn RIGHT, along CTF 21 DME arc, when passing CTF R-085 turn LEFT, intercept CTF R-078 inbound via INDAX to CTF.
NATOV 1L	On RCA R-200 via PEKOD to D35 RCA, turn RIGHT, intercept CTF R-078 inbound via INDAX to CTF.
PIMOR 1L	On CTF R-078 inbound via INDAX to CTF.

LICC/CTA
FONTANAROSSA

JEPPESEN
8 APR 16 10-2G

CATANIA, ITALY
STAR

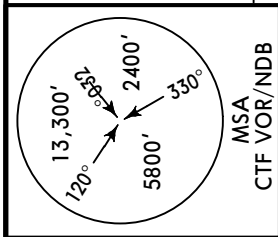


LICC/CTA
FONTANAROSSA

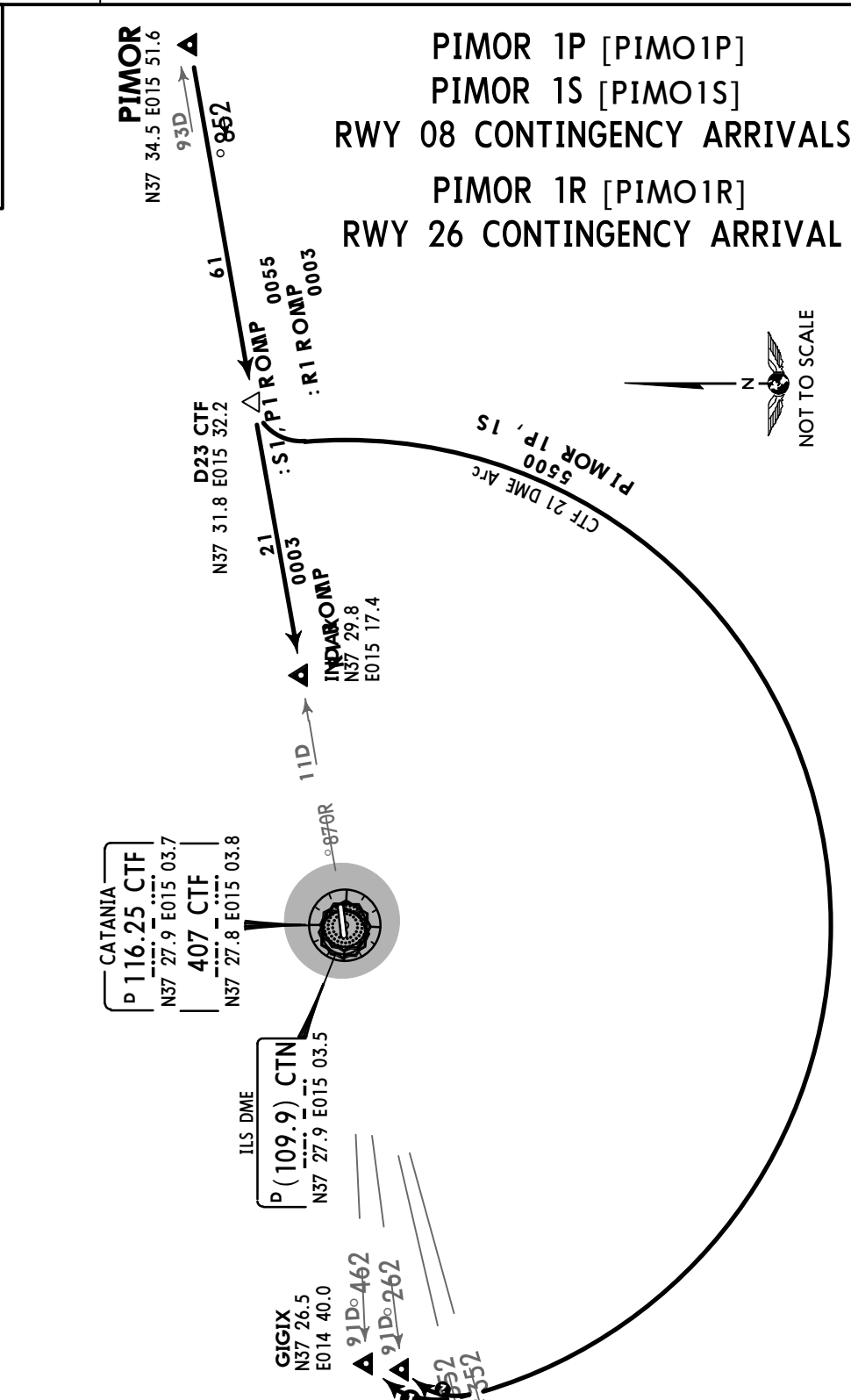
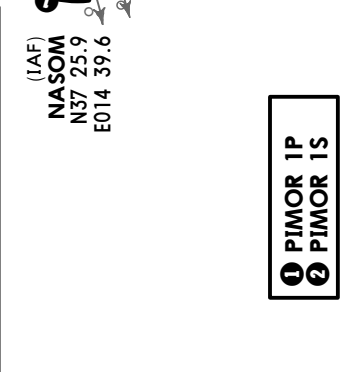
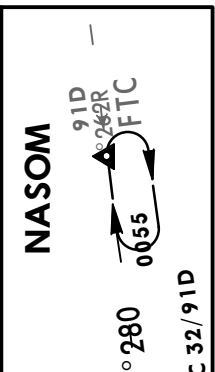
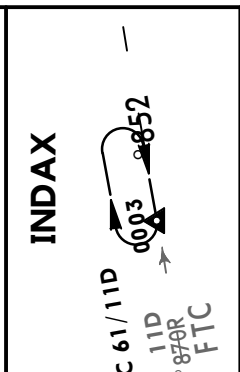
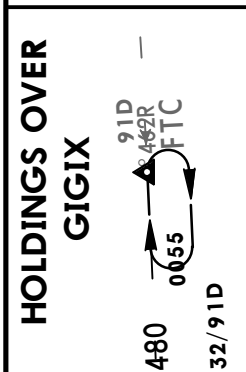
JEPPESSEN
8 APR 16 10-2H

CATANIA, ITALY
STAR

ATIS 127.675	Apt Elev 39'	Alt Set: hPa Trans level: By ATC Trans alt: 7000' For operational limitations refer 10-1Q & 10-1Q1 charts.
------------------------	------------------------	--



STAR	RWY	ROUTING
PIMOR 1P PIMOR 1R PIMOR 1S	08	On CTF R-078 inbound to D23 CTF, turn LEFT, along CTF 21 DME arc, when passing CTF R-255 turn RIGHT, intercept CTF R-264 inbound to GIGIX.
PIMOR 1R PIMOR 1S	26	On CTF R-078 inbound to INDAX.
PIMOR 1R PIMOR 1S	08	On CTF R-078 inbound to D23 CTF, turn LEFT, along CTF 21 DME arc, when passing CTF R-253 turn RIGHT, intercept CTF R-262 inbound to NASOM.



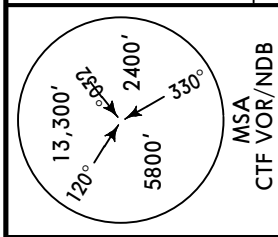
LICC/CTA
FONTANAROSSA

JEPPESEN
8 APR 16 (10-2J)

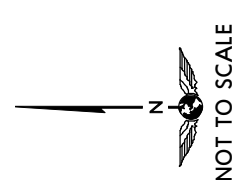
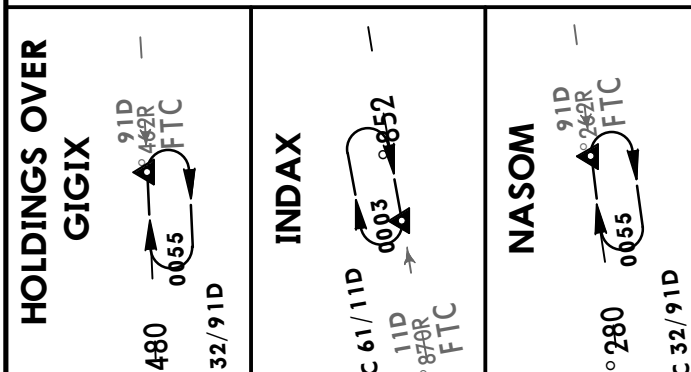
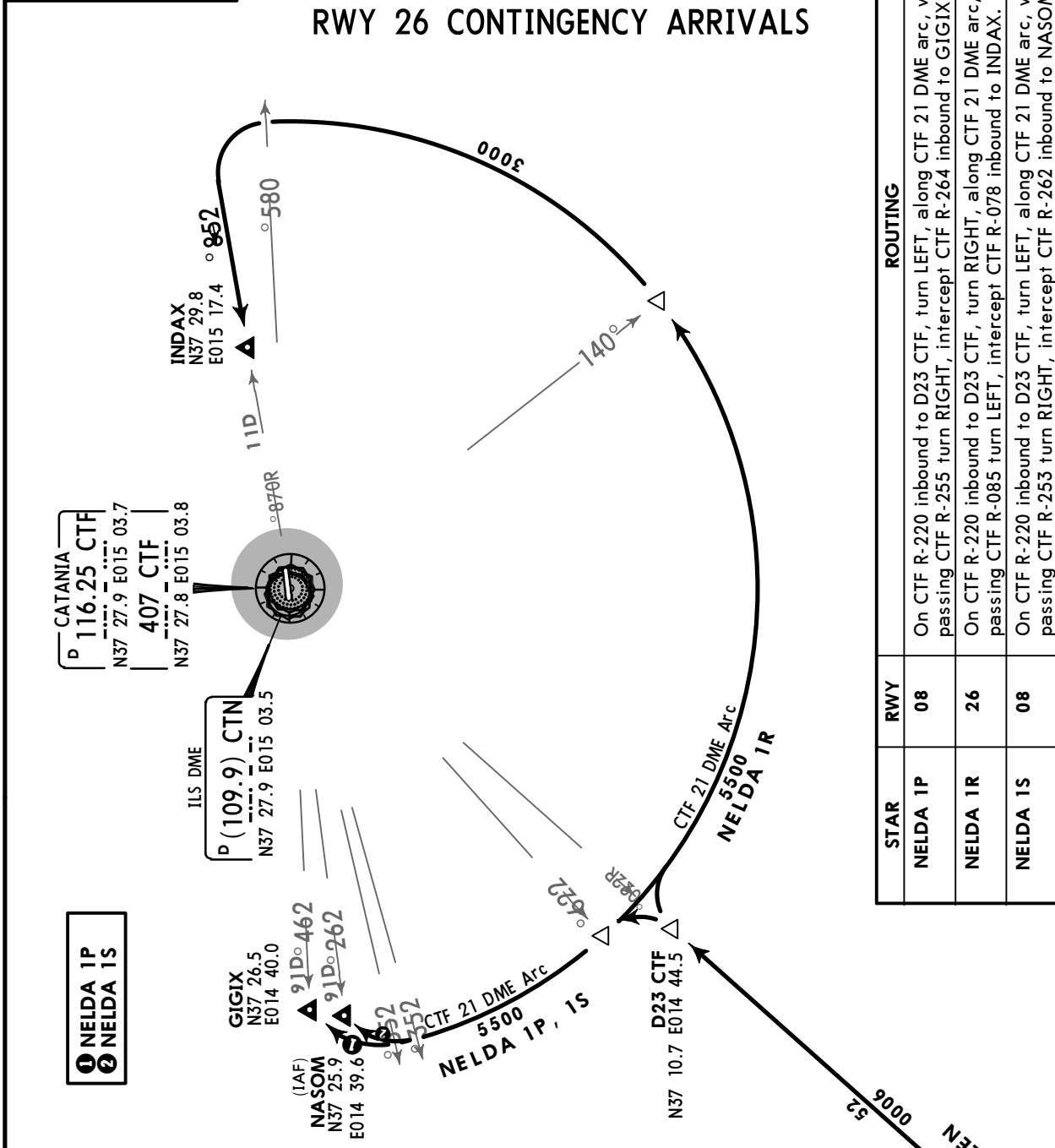
CATANIA, ITALY

STAR

ATIS 127.675	Apt Elev 39'	Alt Set: hPa Trans level: By ATC Trans alt: 7000' For operational limitations refer 10-1Q & 10-1Q1 charts.
-----------------	-----------------	--



NELDA 1P [NELD1P]
NELDA 1S [NELD1S]
RWY 08 CONTINGENCY ARRIVALS
NELDA 1R [NELD1R]
RWY 26 CONTINGENCY ARRIVALS



STAR	RWY	ROUTING
NELDA 1P	08	On CTF R-220 inbound to D23 CTF, turn LEFT, along CTF 21 DME arc, when passing CTF R-255 turn RIGHT, intercept CTF R-264 inbound to GIGIX.
NELDA 1R	26	On CTF R-220 inbound to D23 CTF, turn RIGHT, along CTF 21 DME arc, when passing CTF R-085 turn LEFT, intercept CTF R-078 inbound to INDAX.
NELDA 1S	08	On CTF R-220 inbound to D23 CTF, turn LEFT, along CTF 21 DME arc, when passing CTF R-253 turn RIGHT, intercept CTF R-262 inbound to NASOM.

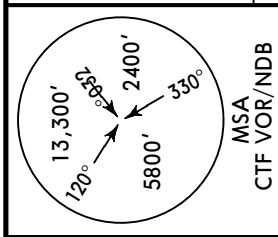
LICC/CTA
FONTANAROSSA

JEPPESEN
8 APR 16 10-2K

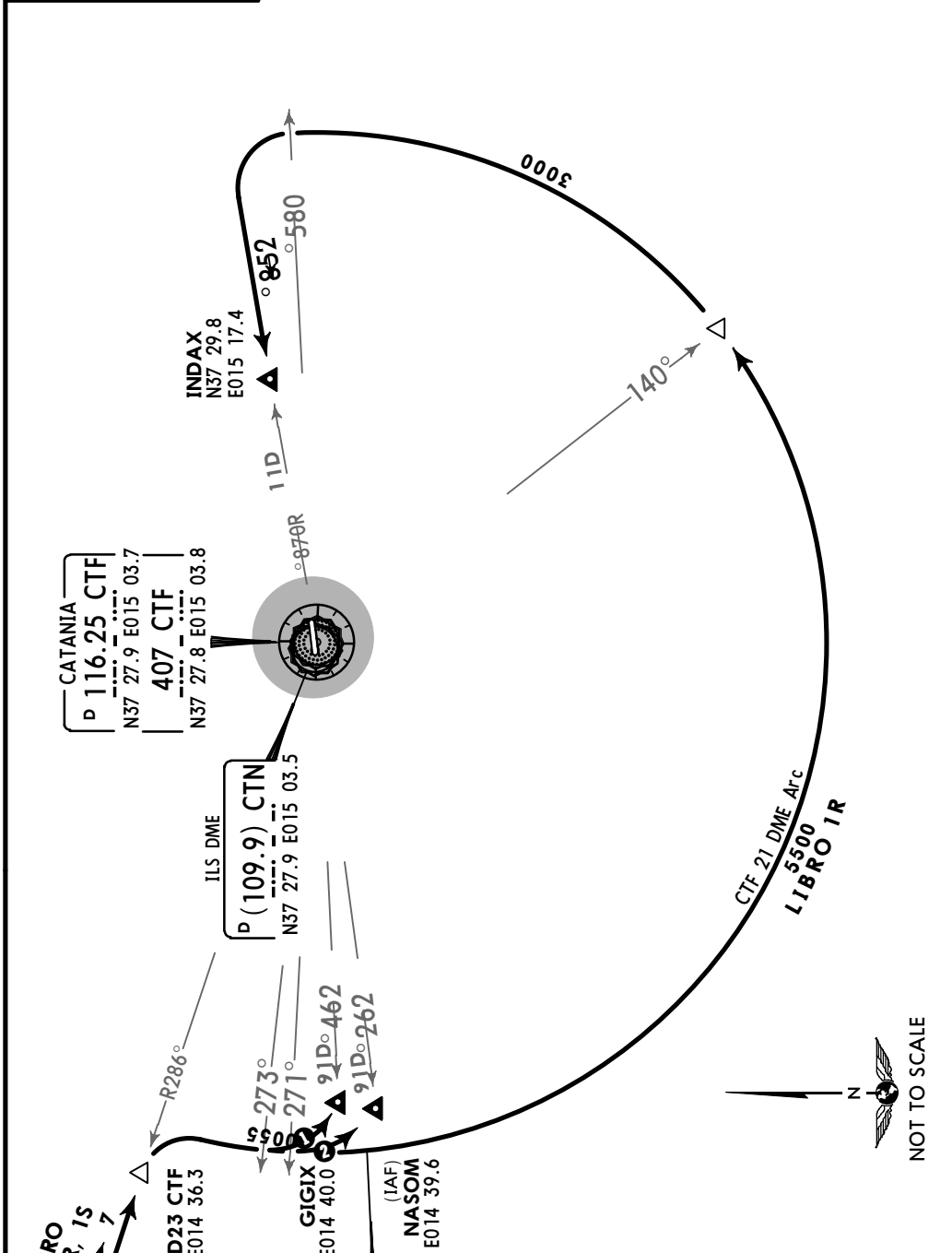
CATANIA, ITALY

STAR

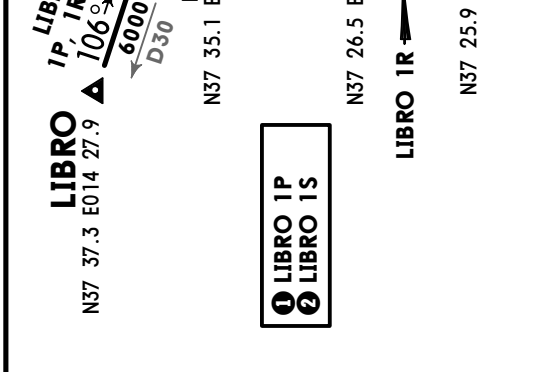
ATIS 127.675	Apt Elev 39'	Alt Set: hPa Trans level: By ATC Trans alt: 7000' For operational limitations refer 10-1Q & 10-1Q1 charts.
------------------------	------------------------	--



**LIBRO 1P [LIBR1P] , LIBRO 1S [LIBR1S]
RWY 08 CONTINGENCY ARRIVALS**
**LIBRO 1R [LIBR1R]
RWY 26 CONTINGENCY ARRIVALS**



STAR	RWY	ROUTING
LIBRO 1P	08	On CTF R-286 inbound to D23 CTF, turn RIGHT, along CTF 21 DME arc, when passing CTF R-273 turn LEFT, intercept CTF R-264 inbound to GIGIX.
LIBRO 1R	26	On CTF R-286 inbound to D23 CTF, turn RIGHT, along CTF 21 DME arc, when passing CTF R-085 turn LEFT, intercept CTF R-078 inbound to INDAX.
LIBRO 1S	08	On CTF R-286 inbound to D23 CTF, turn RIGHT, along CTF 21 DME arc, when passing CTF R-271 turn LEFT, intercept CTF R-262 inbound to NASOM.



HOLDINGS OVER
GIGIX 480 61/11D 280
INDAX 61/11D 11D 870R 280
NASOM 280 32/91D

CHANGES: ATIS commissioned.

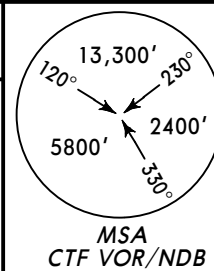
LICC/CTA
FONTANAROSSA

JEPPESEN
1 OCT 10 **10-3**

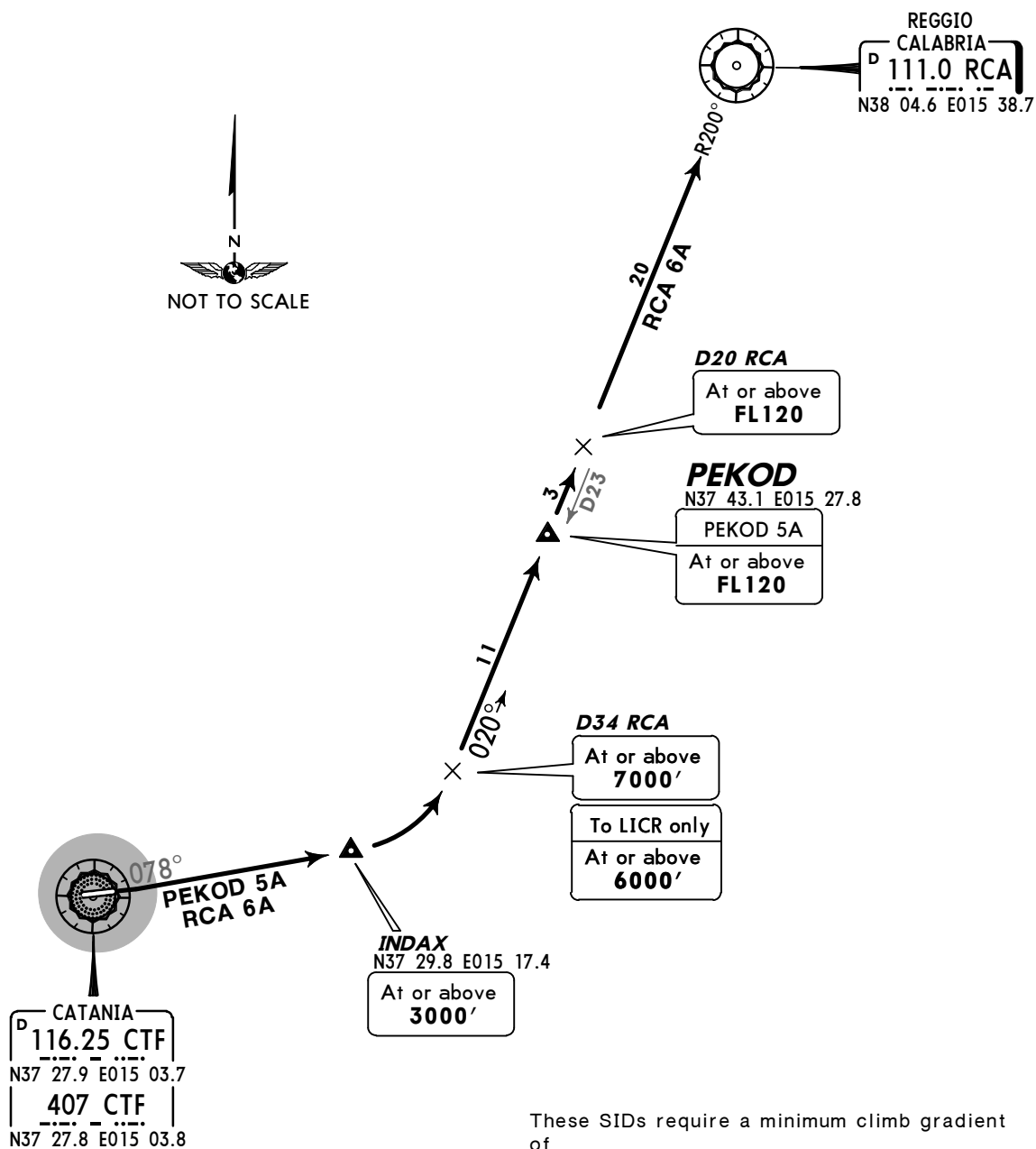
CATANIA, ITALY
SID

Apt Elev
39'

Trans level: By ATC Trans alt: 7000'
EXPECT close-in obstacles.



**PEKOD 5A [PEK05A]
RCA 6A
RWY 08 DEPARTURES
TO NORTH**



These SIDs require a minimum climb gradient of

PEKOD 5A
480' per NM (7.9%) until passing **FL120**
RCA 6A
480' per NM (7.9%) until passing **7000'**
due to ATC purposes.

Gnd speed-KT	75	100	150	200	250	300
480' per NM	600	800	1200	1600	2000	2400

SID	ROUTING
PEKOD 5A	As soon as practicable intercept CTF R-078 to INDAX, turn LEFT, intercept RCA R-200 inbound to PEKOD.
RCA 6A	As soon as practicable intercept CTF R-078 to INDAX, turn LEFT, intercept RCA R-200 inbound to RCA.

LICC/CTA
FONTANAROSSA

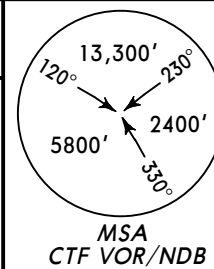
JEPPESEN
1 OCT 10 (10-3A)

CATANIA, ITALY

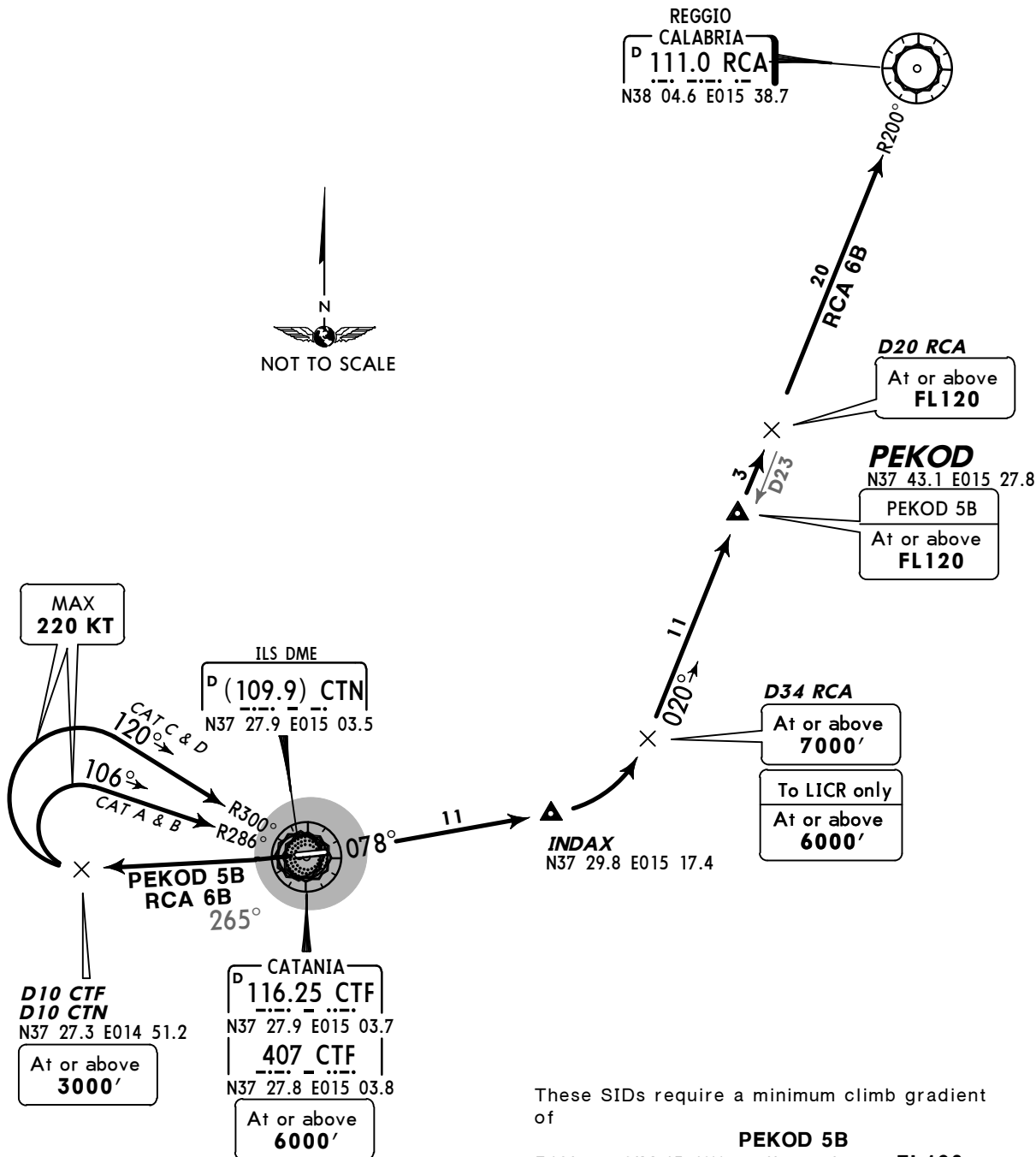
SID

Apt Elev
39'

Trans level: By ATC Trans alt: 7000'
EXPECT close-in obstacles.



PEKOD 5B [PEK05B]
RCA 6B
RWY 26 DEPARTURES
TO NORTH



These SIDs require a minimum climb gradient of

PEKOD 5B
310' per NM (5.1%) until passing **FL120**.
RCA 6B
310' per NM (5.1%) until passing **4500'**.

Gnd speed-KT	75	100	150	200	250	300
310' per NM	387	516	775	1033	1291	1549

SID	ROUTING
PEKOD 5B	As soon as practicable intercept CTF R-265 to D10 CTF/D10 CTN, turn RIGHT, intercept CTF R-286 (CAT A & B) or CTF R-300 (CAT C & D) inbound to CTF, CTF R-078 to INDAX, turn LEFT, intercept RCA R-200 inbound to PEKOD.
RCA 6B	As soon as practicable intercept CTF R-265 to D10 CTF/D10 CTN, turn RIGHT, intercept CTF R-286 (CAT A & B) or CTF R-300 (CAT C & D) inbound to CTF, CTF R-078 to INDAX, turn LEFT, intercept RCA R-200 inbound to RCA.

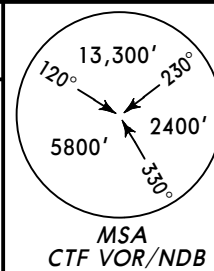
LICC/CTA
FONTANAROSSA

JEPPESEN
18 FEB 11 (10-3B)

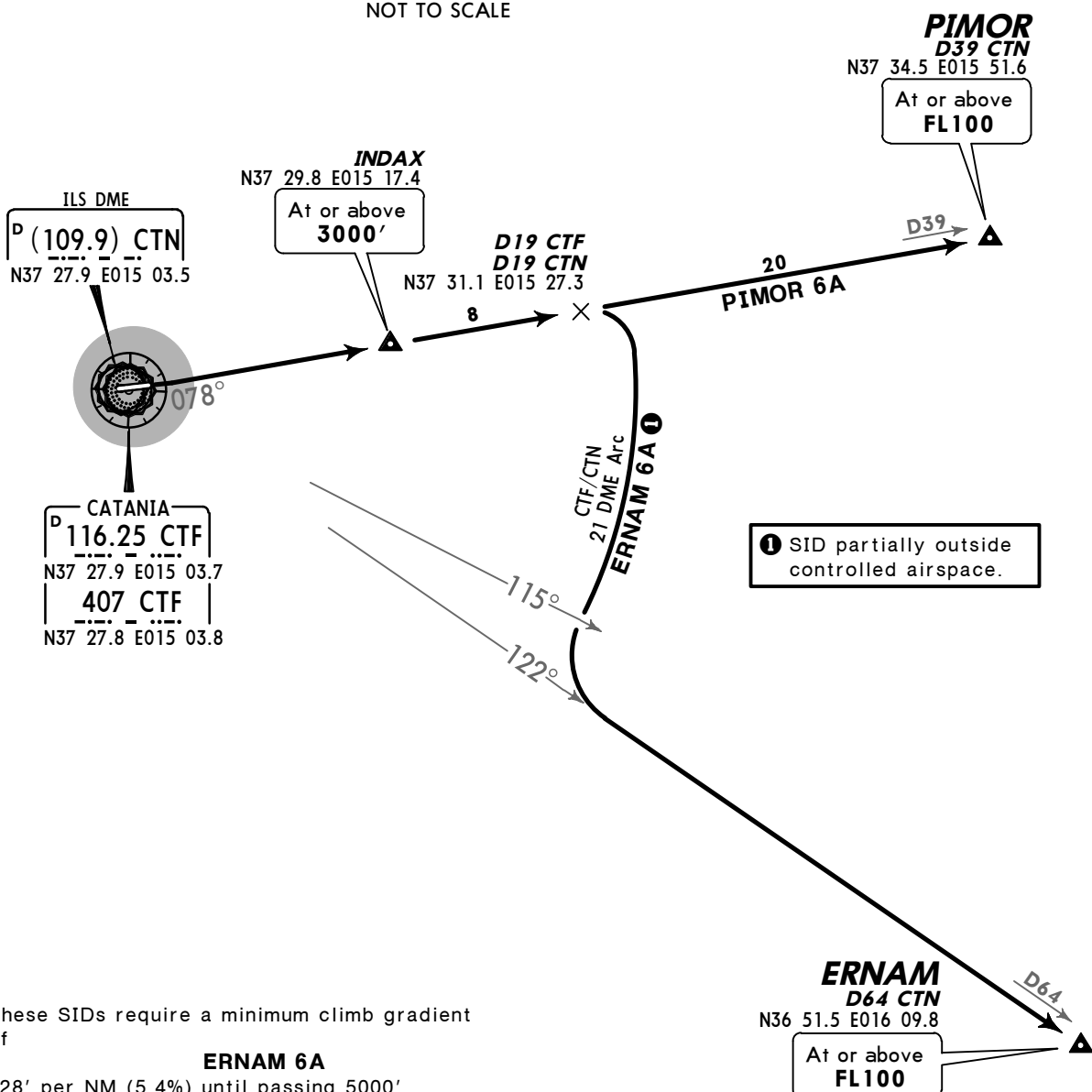
CATANIA, ITALY
SID

Apt Elev
39'

Trans level: By ATC Trans alt: 7000'
EXPECT close-in obstacles.



ERNAM 6A [ERNA6A] ①
PIMOR 6A [PIMO6A]
RWY 08 DEPARTURES
TO EAST



① SID partially outside controlled airspace.

These SIDs require a minimum climb gradient of

- ERNAM 6A**
328' per NM (5.4%) until passing 5000'
- PIMOR 6A**
328' per NM (5.4%) until passing 5500' due to ATC purposes.

Gnd speed-KT	75	100	150	200	250	300
328' per NM	410	547	820	1094	1367	1641

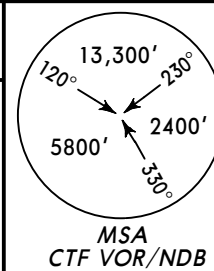
SID	ROUTING
ERNAM 6A	As soon as practicable intercept CTF R-078 via INDAX to D19 CTF/D19 CTN, turn RIGHT, along CTF 21 DME/CTN 21 DME arc, when passing CTF R-115 turn LEFT, intercept CTF R-122 to ERNAM.
PIMOR 6A	As soon as practicable intercept CTF R-078 via INDAX to PIMOR.

LICC/CTA
FONTANAROSSA

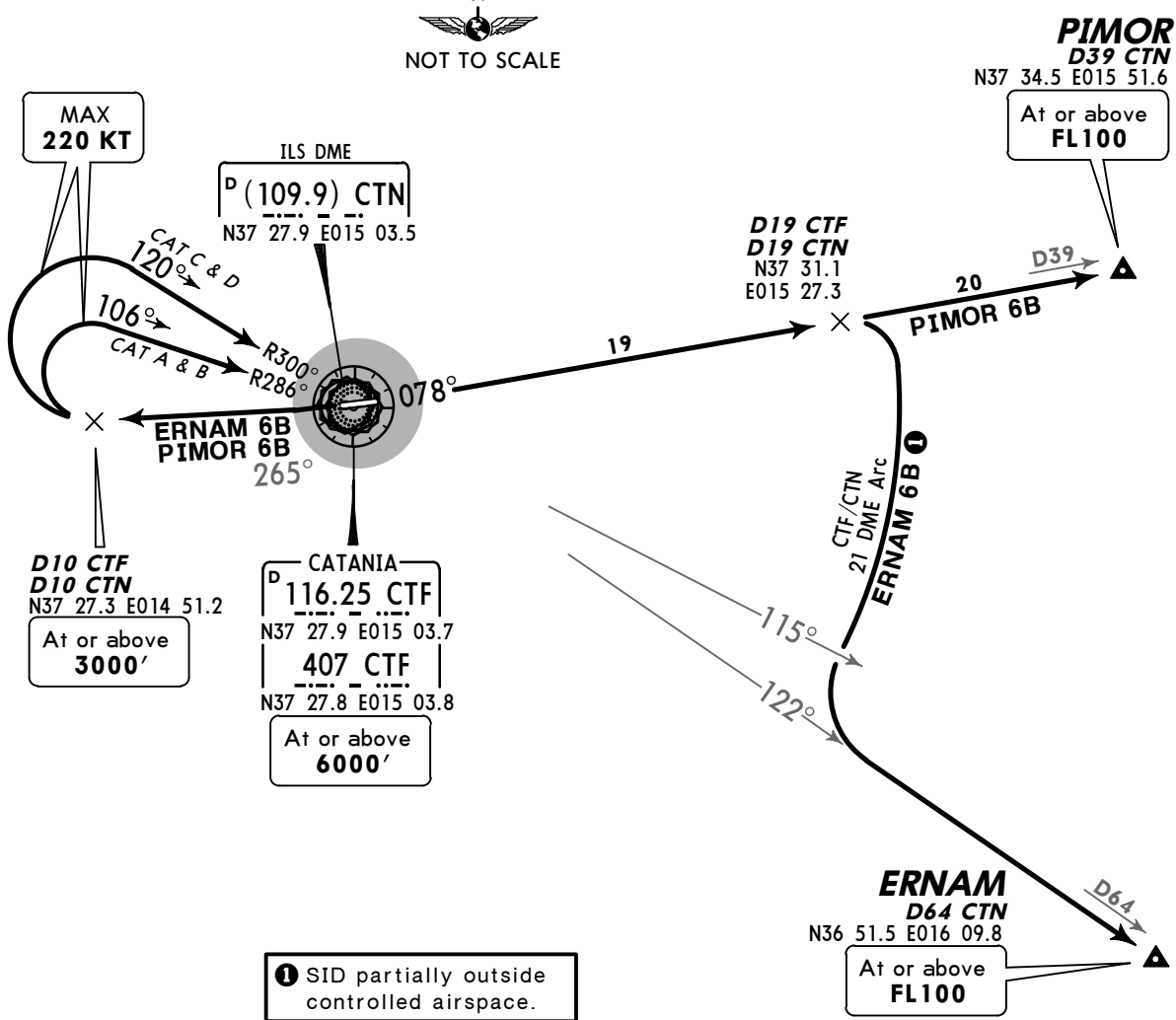
JEPPESEN
18 FEB 11 (10-3C)

CATANIA, ITALY
SID

Apt Elev 39'
Trans level: By ATC Trans alt: 7000'
EXPECT close-in obstacles.



ERNAM 6B [ERNA6B] ①
PIMOR 6B [PIMO6B]
RWY 26 DEPARTURES
TO EAST



These SIDs require a minimum climb gradient of 310' per NM (5.1%) until passing 4500'.

Gnd speed-KT	75	100	150	200	250	300
310' per NM	387	516	775	1033	1291	1549

SID	ROUTING
ERNAM 6B	As soon as practicable intercept CTF R-265 to D10 CTF/D10 CTN, turn RIGHT, intercept CTF R-286 (CAT A & B) or CTF R-300 (CAT C & D) inbound to CTF, CTF R-078 to D19 CTF/D19 CTN, turn RIGHT, along CTF 21 DME/CTN 21 DME arc, when passing CTF R-115 turn LEFT, intercept CTF R-122 to ERNAM.
PIMOR 6B	As soon as practicable intercept CTF R-265 to D10 CTF/D10 CTN, turn RIGHT, intercept CTF R-286 (CAT A & B) or CTF R-300 (CAT C & D) inbound to CTF, CTF R-078 to PIMOR.

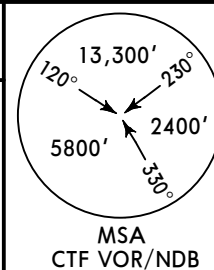
LICC/CTA
FONTANAROSSA

JEPPESEN
13 MAY 16 (10-3D) Eff 26 May

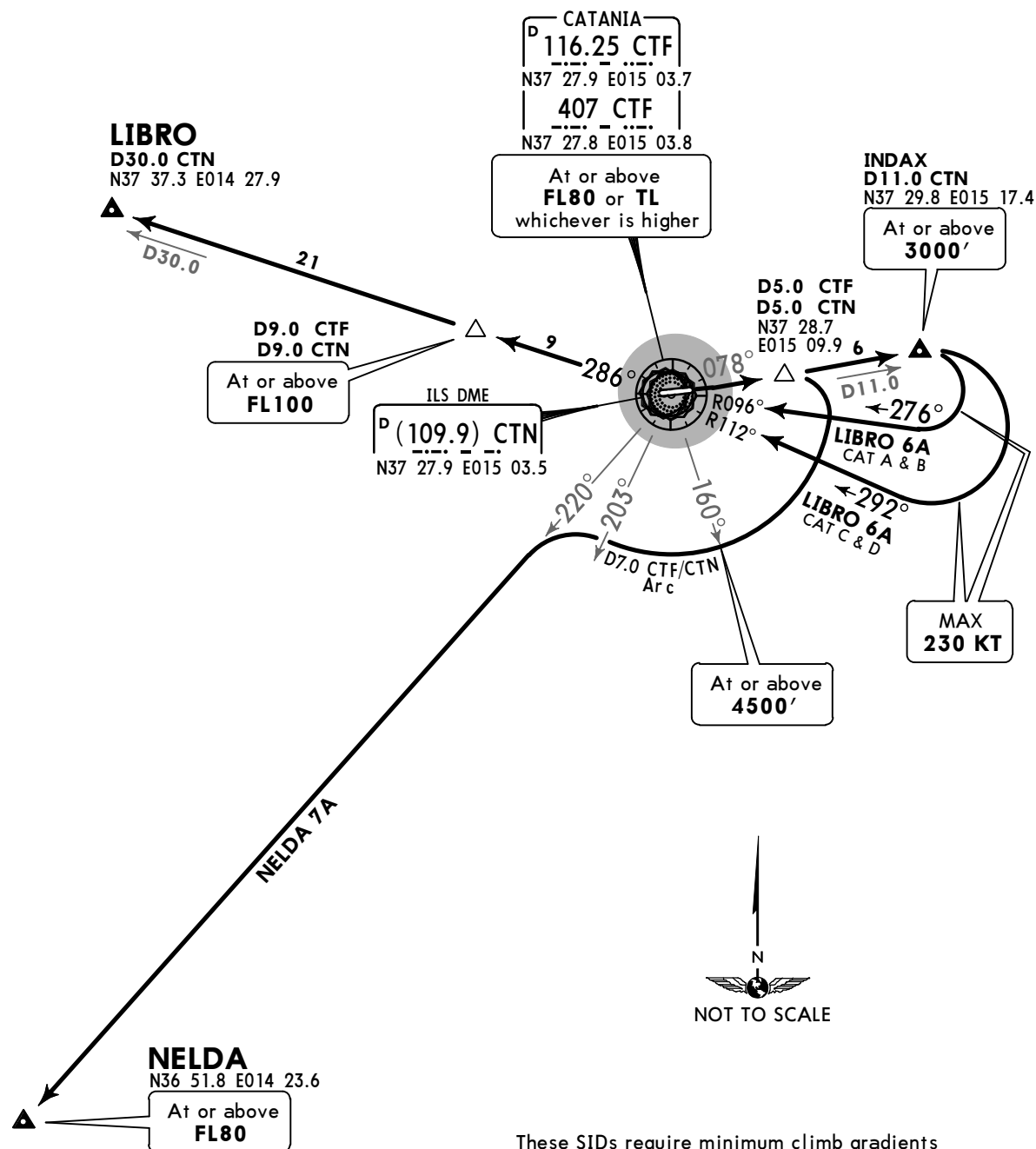
CATANIA, ITALY
SID

Apt Elev
39'

Trans level: By ATC Trans alt: 7000'
EXPECT close-in obstacles.



LIBRO 6A [LIBR6A], NELDA 7A [NELD7A]
RWY 08 DEPARTURES
TO WEST



These SIDs require minimum climb gradients of
LIBRO 6A: 328' per NM (5.4%) until passing FL95.
NELDA 7A: 365' per NM (6%) until passing 5000' due to ATC purposes.

Gnd speed-KT	75	100	150	200	250	300
365' per NM	456	608	911	1215	1519	1823
328' per NM	410	547	820	1094	1367	1641

SID	ROUTING
LIBRO 6A	As soon as practicable intercept CTF R-078 to INDAX, turn RIGHT, intercept CTF R-096 inbound (CAT A & B) or CTF R-112 inbound (CAT C & D) to CTF, CTF R-286 to LIBRO.
NELDA 7A	As soon as practicable intercept CTF R-078 to D5.0 CTF/D5.0 CTN, turn RIGHT, along D7.0 CTF/CTN Arc, when passing CTF R-203 turn LEFT, intercept CTF R-220 to NELDA.

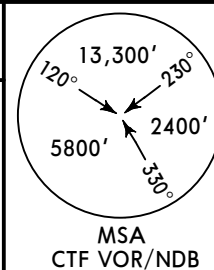
LICC/CTA
FONTANAROSSA

JEPPESEN
13 MAY 16 (10-3E) Eff 26 May

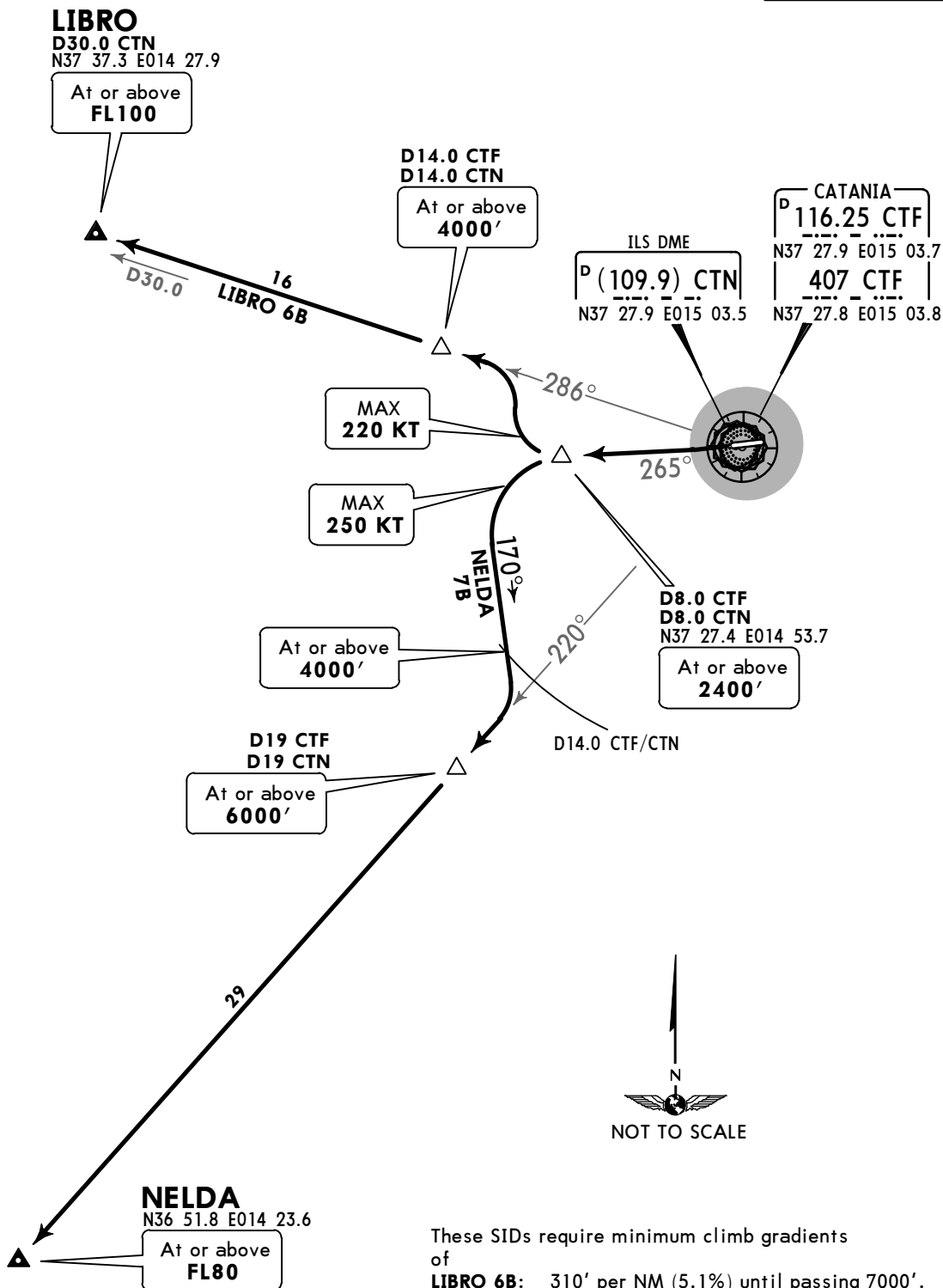
CATANIA, ITALY
SID

Apt Elev
39'

Trans level: By ATC Trans alt: 7000'
EXPECT close-in obstacles.



LIBRO 6B [LIBR6B], NELDA 7B [NELD7B]
RWY 26 DEPARTURES
TO WEST



These SIDs require minimum climb gradients of
LIBRO 6B: 310' per NM (5.1%) until passing 7000'.
NELDA 7B: 310' per NM (5.1%) until passing 5000'.

Gnd speed-KT	75	100	150	200	250	300
310' per NM	387	516	775	1033	1291	1549

SID	ROUTING
LIBRO 6B	As soon as practicable intercept CTF R-265 to D8.0 CTF/D8.0 CTN, turn RIGHT, intercept CTF R-286 to LIBRO.
NELDA 7B	As soon as practicable intercept CTF R-265 to D8.0 CTF/D8.0 CTN, turn LEFT, 170° track, intercept CTF R-220 to NELDA.

LICC/CTA
FONTANAROSSA

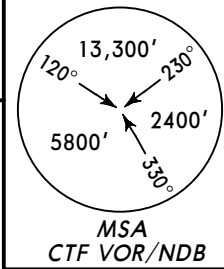
JEPPESEN
26 DEC 14 (10-3F) Eff 8 Jan

CATANIA, ITALY

SID

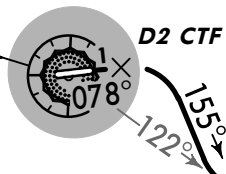
Apt Elev
39'

Trans level: By ATC Trans alt: 7000'
1. EXPECT close-in obstacles.
2. For operational limitations refer 10-1Q & 10-1Q1 charts.



ERNAM 6E [ERNA6E]
RWY 08 CONTINGENCY DEPARTURE
SID PARTIALLY OUTSIDE CONTROLLED AIRSPACE

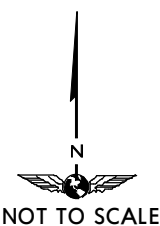
CATANIA
D (H) 116.25 CTF
N37 27.9 E015 03.7
407 CTF
N37 27.8 E015 03.8



155°

ERNAM
N36 51.5 E016 09.8

At or above
FL100



This SID requires a minimum climb gradient of 328' per NM (5.4%) until passing 1000'.

Gnd speed-KT	75	100	150	200	250	300
328' per NM	410	547	820	1094	1367	1641

ROUTING

As soon as practicable intercept CTF R-078 to D2 CTF, turn RIGHT, 155° track, intercept CTF R-122 to ERNAM.

LICC/CTA
FONTANAROSSA

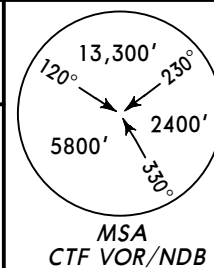
JEPPESEN
26 DEC 14 (10-3G) Eff 8 Jan

CATANIA, ITALY

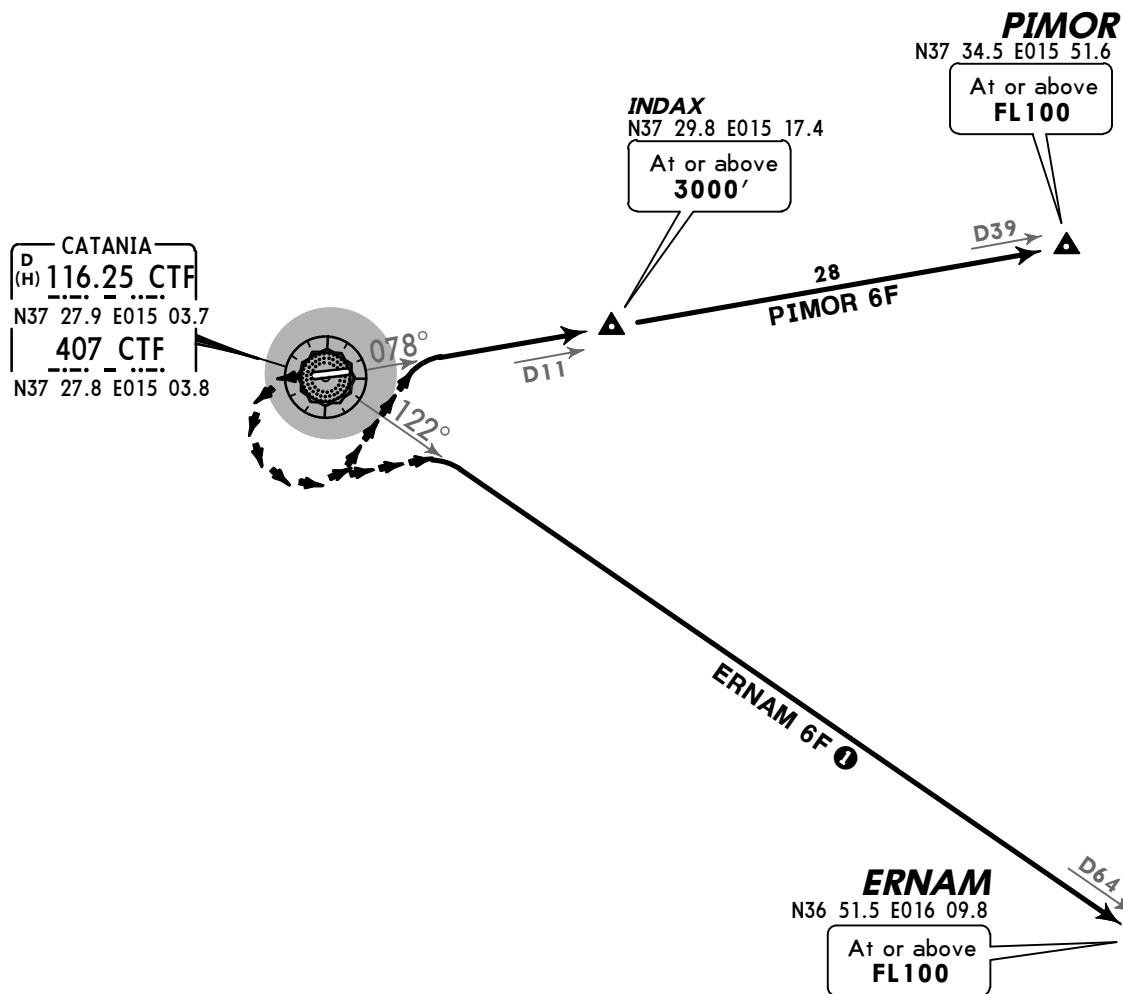
SID

Apt Elev
39'

Trans level: By ATC Trans alt: 7000'
1. EXPECT close-in obstacles.
2. For operational limitations refer 10-1Q & 10-1Q1 charts.



ERNAM 6F, PIMOR 6F
RWY 26 CONTINGENCY DEPARTURES



① SID partially outside controlled airspace.



These SIDs require a minimum climb gradient of 304' per NM (5%).

Gnd speed-KT	75	100	150	200	250	300
304' per NM	380	506	760	1013	1266	1519

SID	ROUTING
ERNAM 6F	Meteorological minima: ceiling 1500'; visibility 5000m. Climb visually, as soon as practicable turn LEFT, intercept CTF R-122, maintain visual conditions until passing 3000', to ERNAM.
PIMOR 6F	Meteorological minima: ceiling 1500'; visibility 5000m. Climb visually, as soon as practicable turn LEFT, intercept CTF R-078, maintain visual conditions until passing 3000', to PIMOR.

LICC/CTA

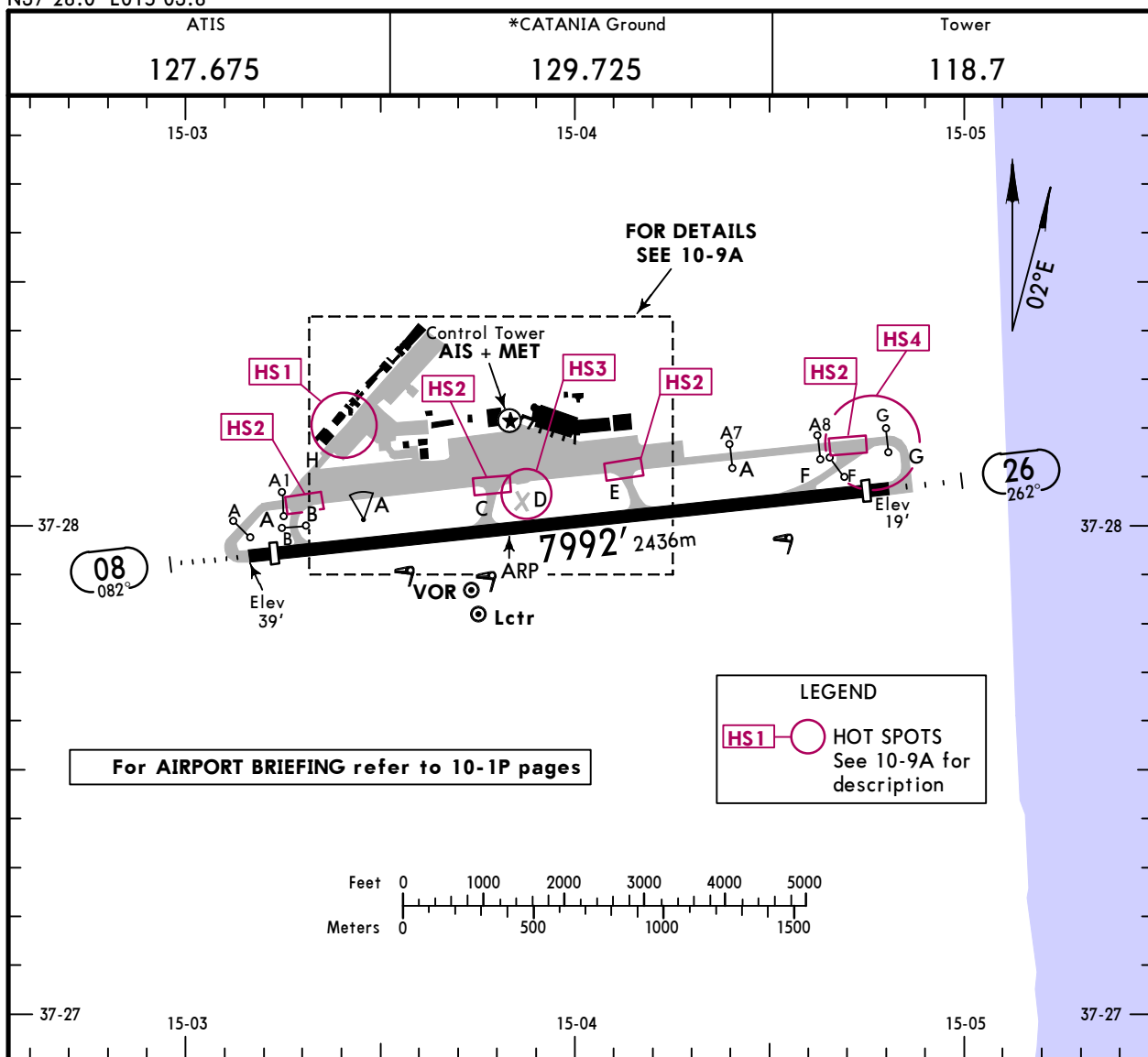
Apt Elev **39'**
N37 28.0 E015 03.8



13 MAY 16 **(10-9)** Eff 26 May

CATANIA, ITALY

FONTANAROSSA



ADDITIONAL RUNWAY INFORMATION

RWY				USABLE LENGTHS		TAKE-OFF	WIDTH
	HIRL CL (30m)	HIALS	REIL PAPI (3.0°)	Threshold	Glide Slope		
08	HIRL CL (30m)	HIALS	REIL PAPI (3.0°) ①	RVR	7677' 2340m	6401' 1951m	148'
26	HIRL CL (30m)	HIALS	REIL PAPI (3.0°) ②		7710' 2350m		45m

- ① Azimuth coverage reduced to 5° LEFT side of RCL and not usable last 1969'/600m before THR 08.
- ② Not usable last 1476'/450m before THR 26.

③ TAKE-OFF RUN AVAILABLE

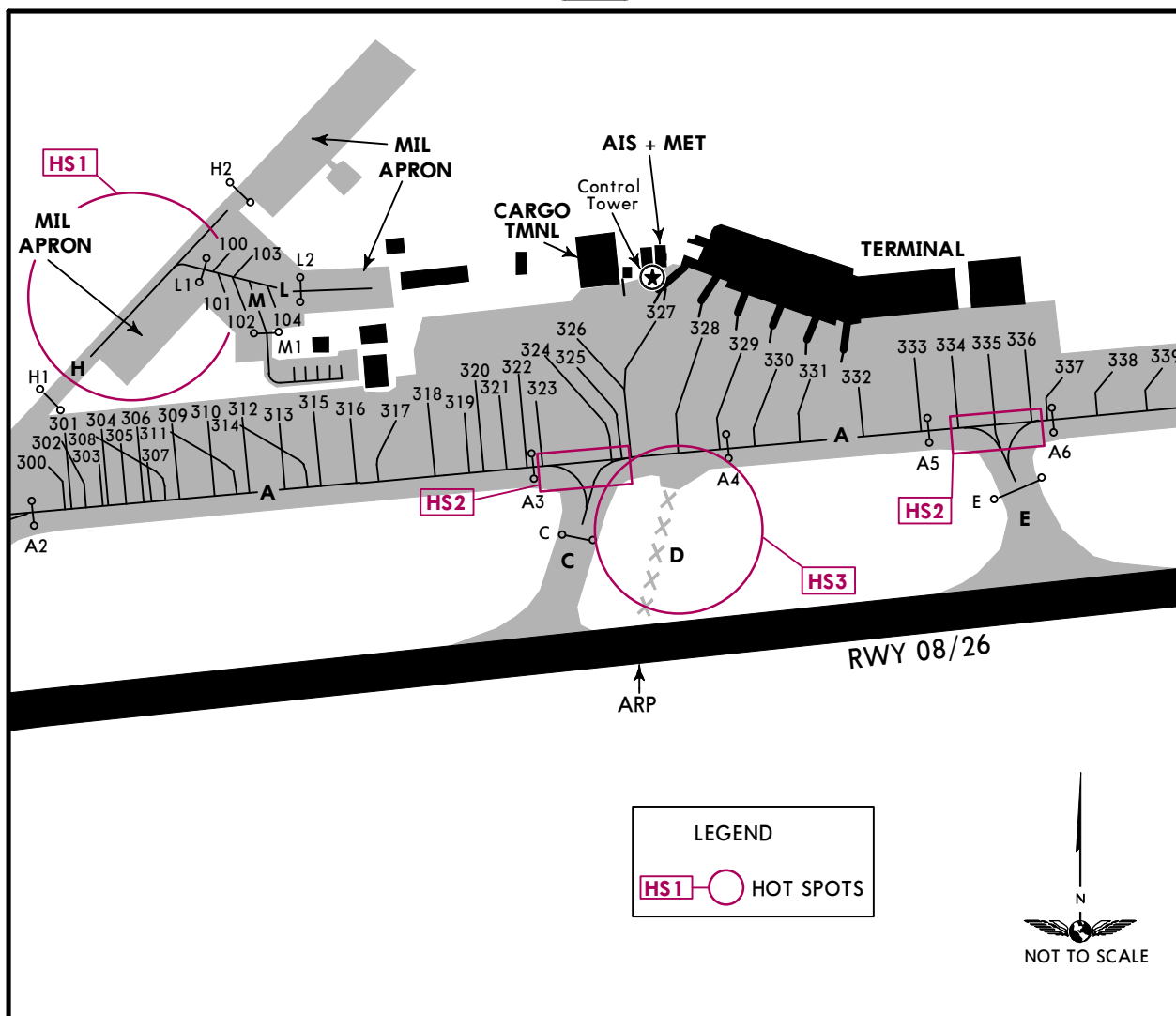
RWY 08:		RWY 26:	
From rwy head	7992' (2436m)	From rwy head	7992' (2436m)
twy B int	6988' (2130m)	twy F int	6316' (1925m)

Standard		TAKE-OFF	
All Rwys			
RCLM (DAY only) or RL		NIL (DAY only)	
A	RVR 800m		
B			
C			
D			

LICC/CTA

JEPPESEN
13 MAY 16 (10-9A) Eff 26 May

CATANIA, ITALY
FONTANAROSSA



INS COORDINATES

STAND No.	COORDINATES	STAND No.	COORDINATES
100 thru 104	N37 28.2 E015 03.5	331, 332	N37 28.2 E015 04.0
300	N37 28.1 E015 03.3	333 thru 336	N37 28.2 E015 04.1
301 thru 309	N37 28.1 E015 03.4	337, 338	N37 28.2 E015 04.2
310	N37 28.1 E015 03.5	339	N37 28.2 E015 04.3
311	N37 28.1 E015 03.4		
312 thru 314	N37 28.1 E015 03.5		
315 thru 317	N37 28.1 E015 03.6		
318 thru 323	N37 28.1 E015 03.7		
324 thru 327	N37 28.2 E015 03.8		
328 thru 330	N37 28.2 E015 03.9		

HOT SPOTS

(For information only, not to be construed as ATC instructions.)

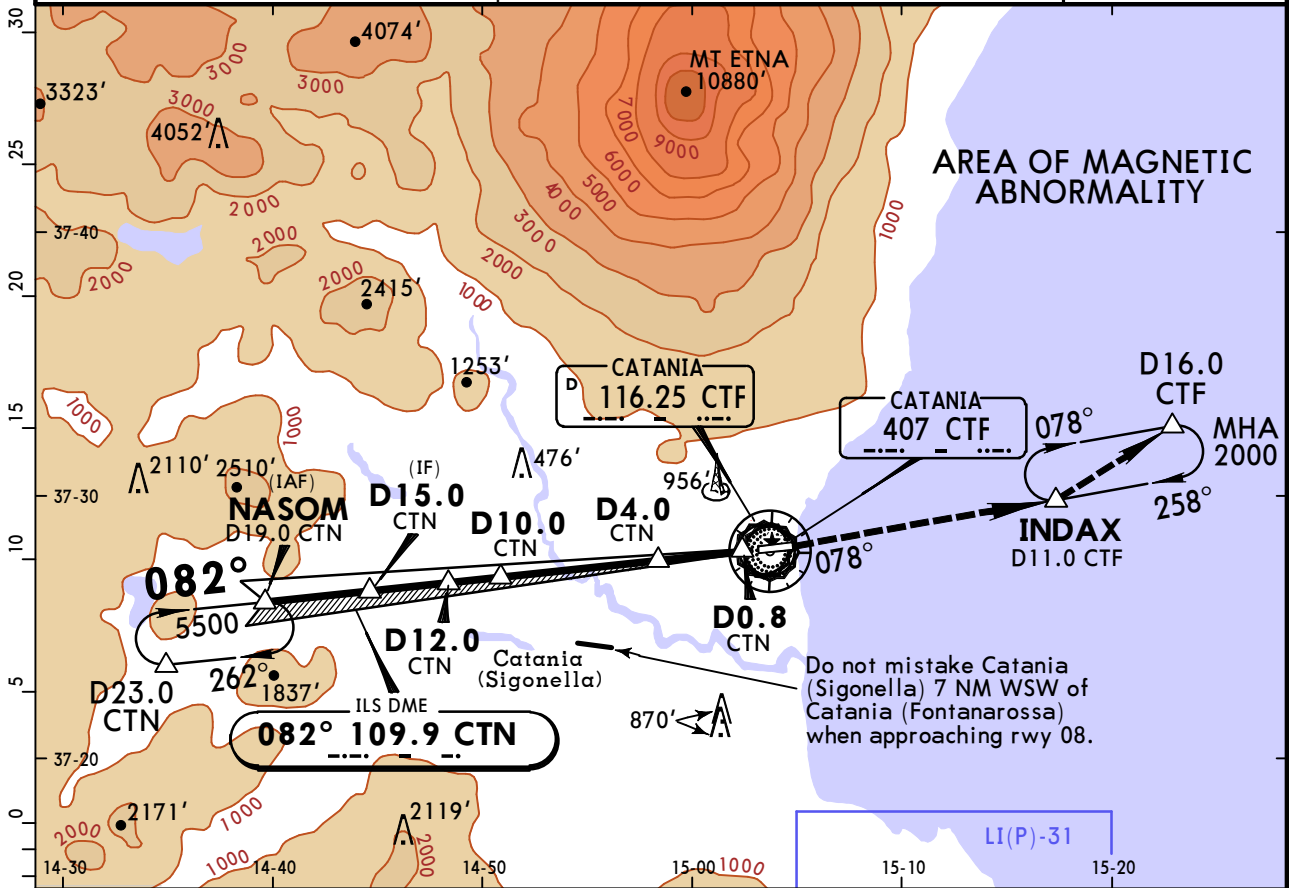
- HS1** Taxi with CAUTION due to tow ACFT crossing apron TWY H.
- HS2** ACFT taxiing on apron TWY A may interfere with ACFT holding at holding positions B,C,E and F; ATC may instruct ACFT to hold at specific intermediate holding positions.
- HS3** TWY D closed.
- HS4** RWY holding position G far away from the RWY.

LICC/CTA FONTANAROSSA

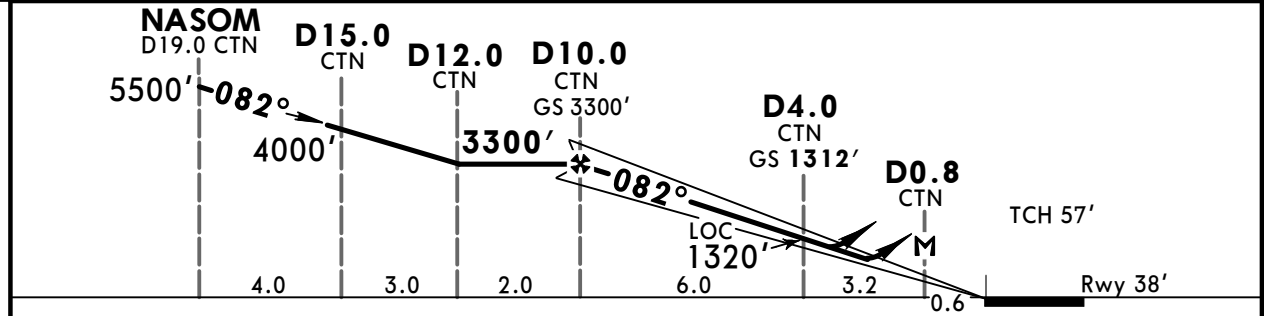
JEPPESSEN
8 APR 16 (11-1)

CATANIA, ITALY ILS or LOC Z Rwy 08

ATIS 127.675		CATANIA Radar (APP) 119.250		CATANIA Tower 118.7		*Ground 129.725	
LOC CTN 109.9	Final Apch Crs 082°	GS D4.0 CTN 1312' (1274')	ILS DA(H) Refer to Minimums	Apt Elev 39' Rwy 38'		<p>MSA CTF VOR/NDB</p>	
MISSED APCH: As soon as practicable join R-078 and climb to 2000' to INDAX and hold.							
Alt Set: hPa		Rwy Elev: 1 hPa		Trans level: By ATC		Trans alt: 7000'	
1. VOR DME required. 2. Mt ETNA 10880' 17.0 NM North of apt. 3. Possible existence of volcanic cloud up to 20000'.							



LOC (GS out)	CTN DME	9.0	8.0	7.0	6.0	5.0	4.0	3.0	2.0
	ALTITUDE	2990'	2670'	2350'	2030'	1710'	1400'	1080'	760'



Gnd speed-Kts	70	90	100	120	140	160	HIALS REIL PAPI PAPI	As soon as practicable 2000' onto 116.25 CTF R-078 LT	
ILS GS or LOC Descent Angle	3.00°	372	478	531	637	743			849
MAP at D0.8 CTN									

Standard				STRAIGHT-IN LANDING RWY 08				CIRCLE-TO-LAND			
ILS DA(H)		LOC (GS out)		Not authorized North of airport							
A: 268' (230') B: 278' (240')		C: 288' (250') D: 298' (260')		DA(H) 650' (612')							
FULL/Limited		ALS out		ALS out		ALS out		Max Kts		MDA(H) VIS	
A		RVR 1000m		RVR 1200m		RVR 1500m		100		660' (621') 1500m	
B		RVR 1100m		RVR 1300m		CMV 2400m		135		660' (621') 1600m	
C		RVR 1100m						180		780' (741') 2400m	
D								205		800' (761') 3600m	

PANS OPS

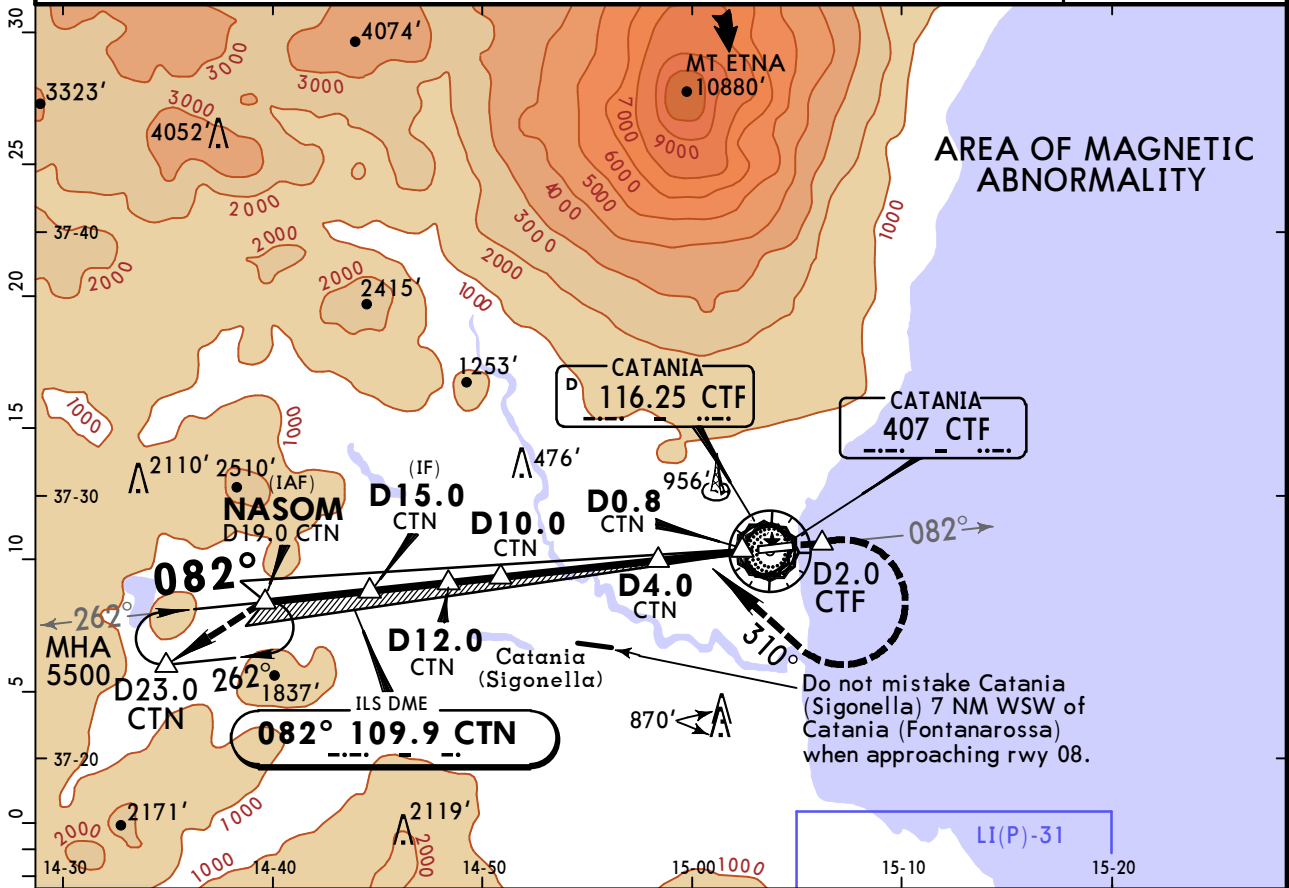
LICC/CTA FONTANAROSSA



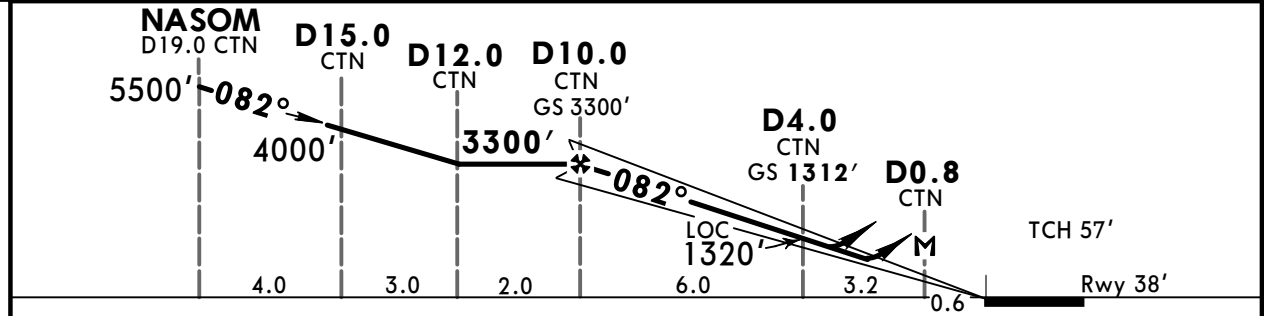
CATANIA, ITALY

8 APR 16 **(11-2)** CONTINGENCY ILS or LOC Y Rwy 08

ATIS 127.675		CATANIA Radar (APP) 119.250		CATANIA Tower 118.7		*Ground 129.725	
LOC CTN 109.9	Final Apch Crs 082°	GS D4.0 CTN 1312' (1274')	ILS DA(H) Refer to Minimums	Apt Elev 39' Rwy 38'			
MISSED APCH: Maintain 082° and climb to 5500'. At D2.0 CTF turn RIGHT (MAX 200 KT) onto 310° to join and follow R-262 to holding.							
Alt Set: hPa		Rwy Elev: 1 hPa		Trans level: By ATC		Trans alt: 7000'	
1. VOR DME required. 2. Mt ETNA 10880' 17.0 NM North of apt. 4. Possible existence of volcanic cloud up to 20000'.							



LOC (GS out)	CTN DME	9.0	8.0	7.0	6.0	5.0	4.0	3.0	2.0
	ALTITUDE	2990'	2670'	2350'	2030'	1710'	1400'	1080'	760'



Gnd speed-Kts	70	90	100	120	140	160	HIALS REIL PAPI PAPI	D2.0 CTF on 082°	
ILS GS or									
LOC Descent Angle	3.00°	372	478	531	637	743			849
MAP at D0.8 CTN									

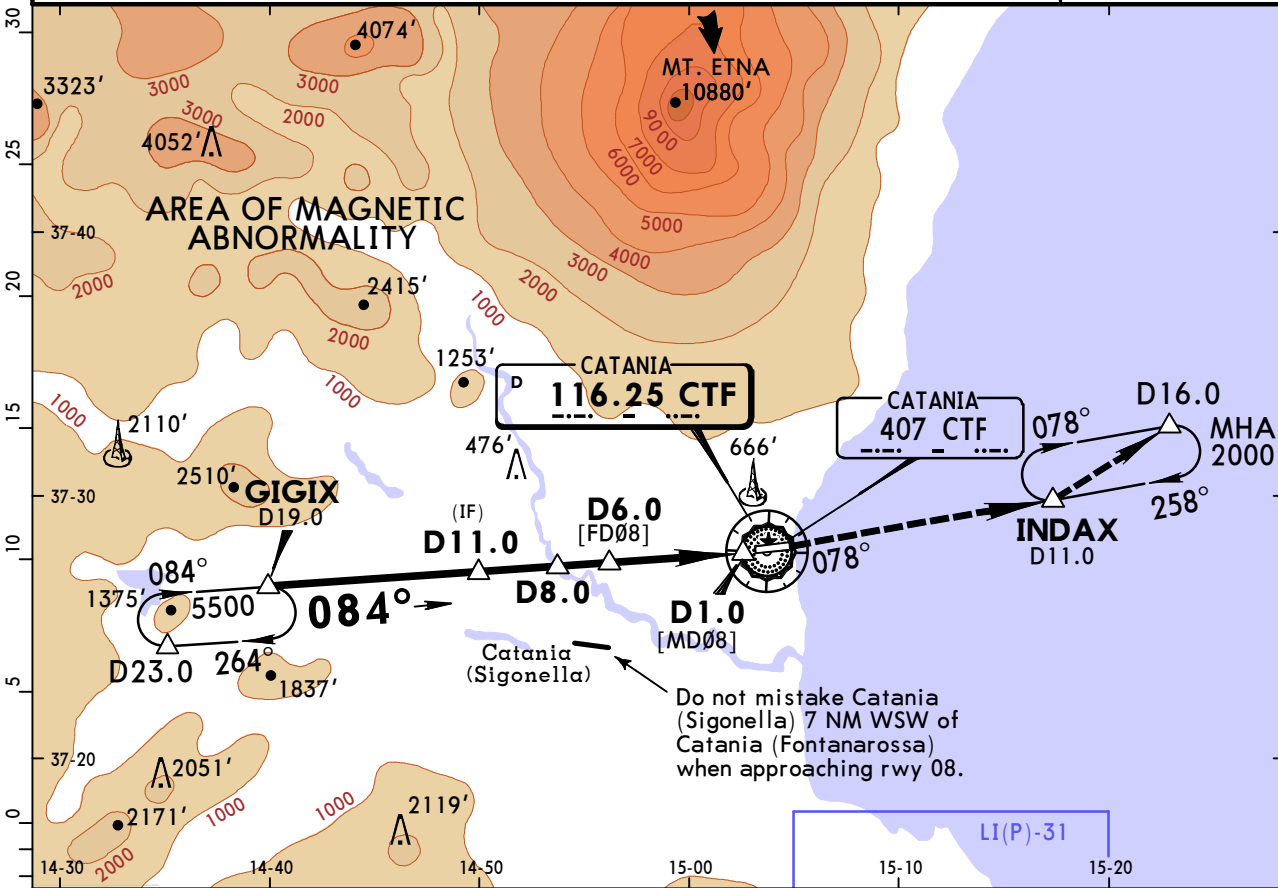
Standard STRAIGHT-IN LANDING RWY 08					CIRCLE-TO-LAND I	
Missed apch climb gradient mim 3.2%					Missed apch climb gradient mim 2.5%	
DA(H) ILS		LOC (GS out) DA(H)		LOC (GS out) DA(H)		
A: 268' (230')	C: 288' (250')	650' (612')	1250' (1212')	1250' (1212')		
B: 278' (240')	D: 298' (260')					
FULL/Limited	ALS out	ALS out	ALS out	ALS out		
PANS OPS	A	RVR 1200m	RVR 1500m	RVR 1500m	Max Kts MDA(H) VIS 100 660' (621') 1500m 135 660' (621') 1600m 180 780' (741') 2400m 205 800' (761') 3600m	
	B	RVR 1000m	RVR 1200m	RVR 1500m		
	C	RVR 1300m	CMV 2400m	CMV 2400m		
	D	RVR 1100m				
I With missed apch climb gradient mim 2.5%: MDA(H) 1260' (1221'), VIS 5000m.						

LICC/CTA
FONTANAROSSA

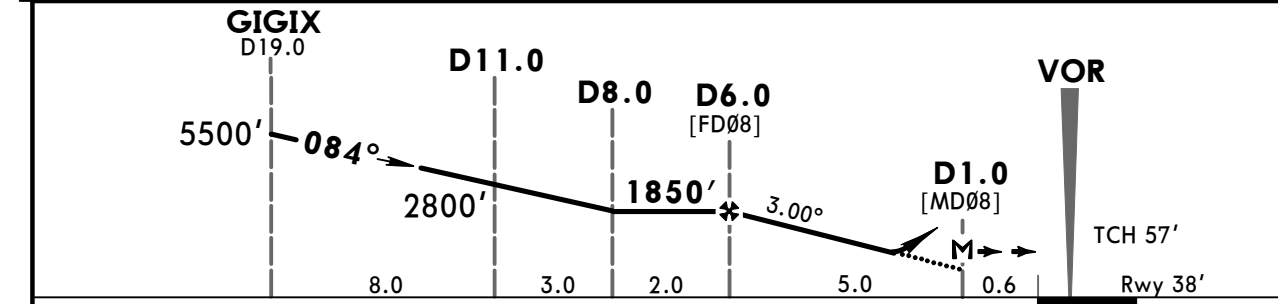
JEPPESEN
8 APR 16 (13-1)

CATANIA, ITALY
VOR Z Rwy 08

ATIS 127.675		CATANIA Radar (APP) 119.250		CATANIA Tower 118.7		*Ground 129.725	
VOR CTF 116.25	Final Apch Crs 084°	Minimum Alt D6.0 1850' (1812')	DA(H) 650' (612')	Apt Elev 39' Rwy 38'			
MISSED APCH: As soon as practicable join R-078 and climb to 2000' to INDAX and hold.							
Alt Set: hPa Rwy Elev: 1 hPa Trans level: By ATC Trans alt: 7000' 1. DME required. 2. Mt ETNA 10880' 17.0 NM North of apt. 3. Possible existence of volcanic cloud up to 20000'.							



CTF DME	5.0	4.0	3.0
ALTITUDE	1540'	1220'	900'



Gnd speed-Kts	70	90	100	120	140	160	HIALS REIL PAPI PAPI	As soon as practicable	2000' onto LT	CTF R-078
Descent Angle 3.00°	372	478	531	637	743	849				
MAP at D1.0										

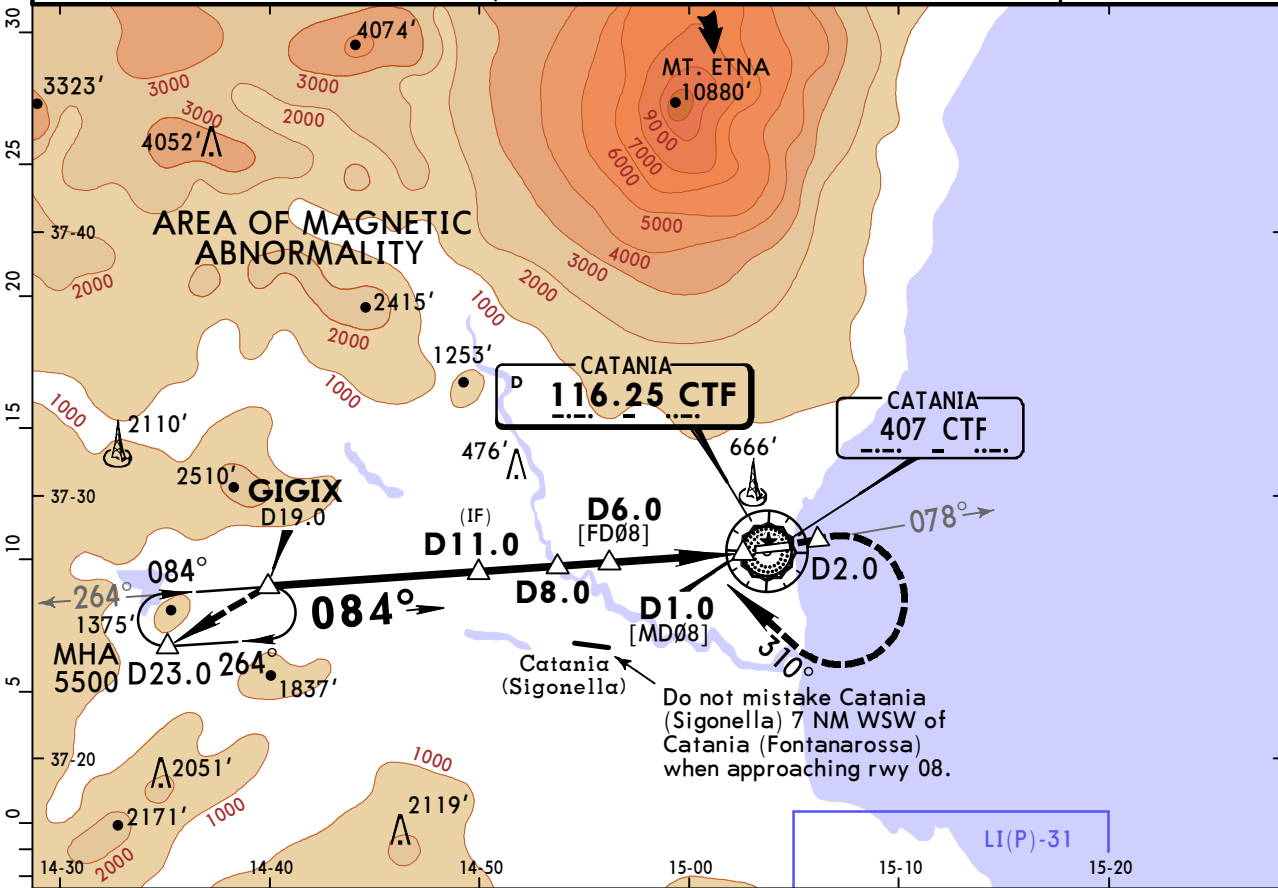
PANS OPS	Standard STRAIGHT-IN LANDING RWY 08						CIRCLE-TO-LAND Not authorized North of airport		
	DA(H) 650' (612')						Max Kts	MDA(H)	VIS
	A	RVR 1500m					100	660' (621')	1500m
	B						135	660' (621')	1600m
	C	CMV 2400m					180	780' (741')	2400m
D						205	800' (761')	3600m	

LICC/CTA
FONTANAROSSA

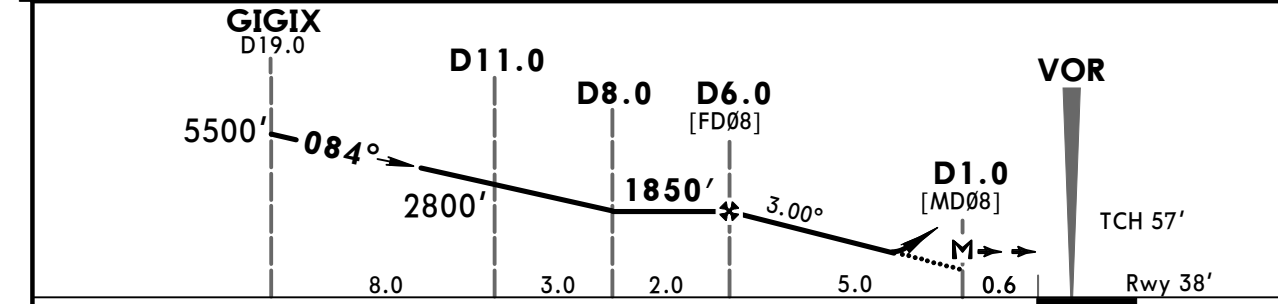
JEPPESEN
8 APR 16 (13-2)

CATANIA, ITALY
CONTINGENCY VOR Y Rwy 08

ATIS 127.675		CATANIA Radar (APP) 119.250		CATANIA Tower 118.7		*Ground 129.725	
VOR CTF 116.25	Final Apch Crs 084°	Minimum Alt D6.0 1850' (1812')	DA(H) Refer to Minimums	Apt Elev 39' Rwy 38'			
MISSED APCH: As soon as practicable join R-078 and climb to 5500'. At D2.0 turn RIGHT (MAX 200 KT) onto 310° to join and follow R-264 to holding.							
Alt Set: hPa		Rwy Elev: 1 hPa		Trans level: By ATC		Trans alt: 7000'	
1. DME required. 2. Mt ETNA 10880' 17.0 NM North of apt. 3. Possible existence of volcanic cloud up to 20000'.							



CTF DME	5.0	4.0	3.0
ALTITUDE	1540'	1220'	900'



Gnd speed-Kts	70	90	100	120	140	160	HIALS REIL PAPI PAPI As soon as practicable	D2.0 CTF via 116.25 LT R-078
Descent Angle 3.00°	372	478	531	637	743	849		
MAP at D1.0								

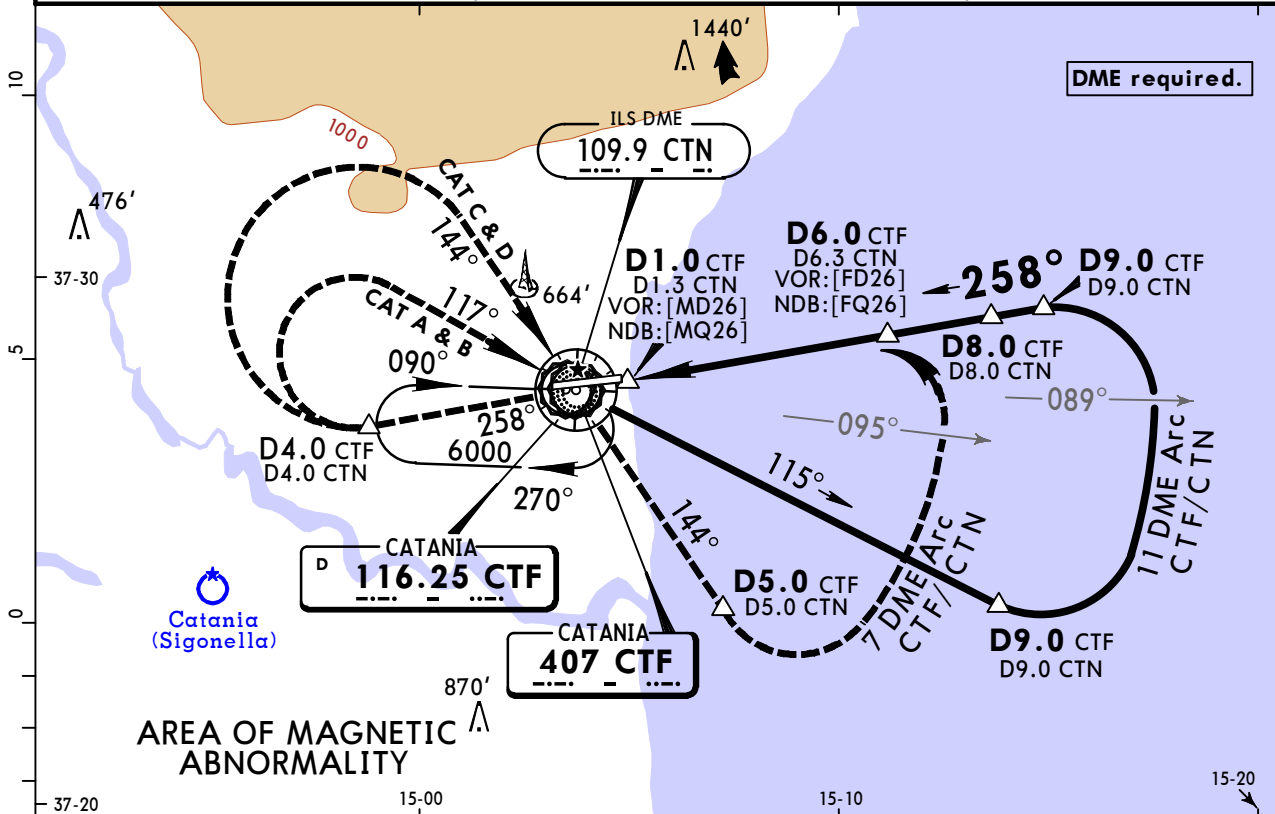
PANS OPS	Standard STRAIGHT-IN LANDING RWY 08		CIRCLE-TO-LAND 1	
	Missed apch climb gradient mim 3.2%		Missed apch climb gradient mim 2.5%	
	DA(H) 650' (612')		DA(H) 1250' (1212')	
	RVR 1500m		CMV 5000m	
	CMV 2400m		Not authorized North of airport Max Kts. MDA(H) VIS 100 660' (621') 1500m 135 660' (621') 1600m 180 780' (741') 2400m 205 800' (761') 3600m	
1 With missed apch climb gradient mim 2.5%: MDA(H) 1260' (1221'), VIS 5000m.				

LICC/CTA
FONTANAROSSA

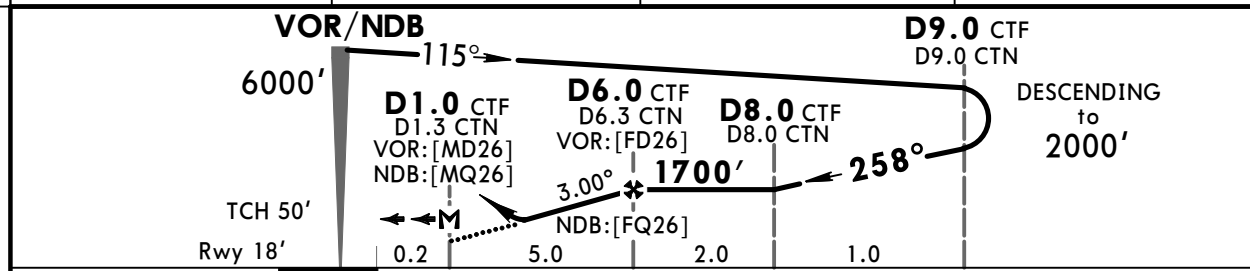
JEPPesen
8 APR 16 (13-3)

CATANIA, ITALY
VOR Z or NDB Rwy 26

ATIS 127.675		CATANIA Radar (APP) 119.250		CATANIA Tower 118.7		*Ground 129.725	
BRIEFING STRIP™	VOR CTF 116.25	Final Apch Crs 258°	Minimum Alt D6.0 CTF 1700' (1682')	DA(H) 630' (612')	Apt Elev 39'		
	NDB CTF 407						
<p>MISSED APCH: Climb to 5000' and proceed on 258°. At D4.0 CTF/CTN turn RIGHT (MAX 210 KT) onto 144° (CAT A & B: 117°) to VOR/NDB. Leave VOR/NDB on R-144. At D5.0 CTF/CTN turn LEFT to join and follow 7 DME Arc CTF/CTN. Crossing R-095 turn LEFT to join and follow R-078 inbound to holding.</p>							
<p>Alt Set: hPa Rwy Elev: 1 hPa Trans level: By ATC Trans alt: 7000'</p> <p>1. Mt ETNA 10880' 17.0 NM North of apt. 2. Possible existence of volcanic cloud up to 20000'.</p>							



CTF DME	3.0	4.0	5.0
ALTITUDE	750'	1070'	1390'



Gnd speed-Kts	70	90	100	120	140	160	HIALS REIL - PAPI - PAPI ---	D4.0 CTF/CTN on 258°
Descent Angle	3.00°	372	478	531	637	849		
MAP at D1.0 CTF/ D1.3 CTN								

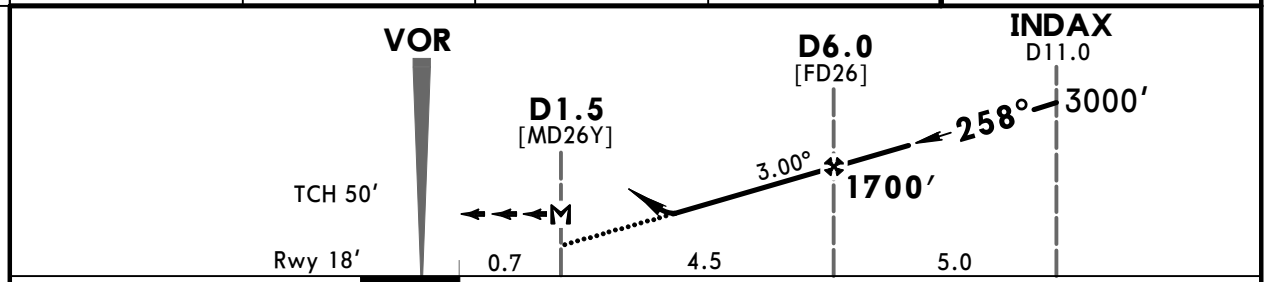
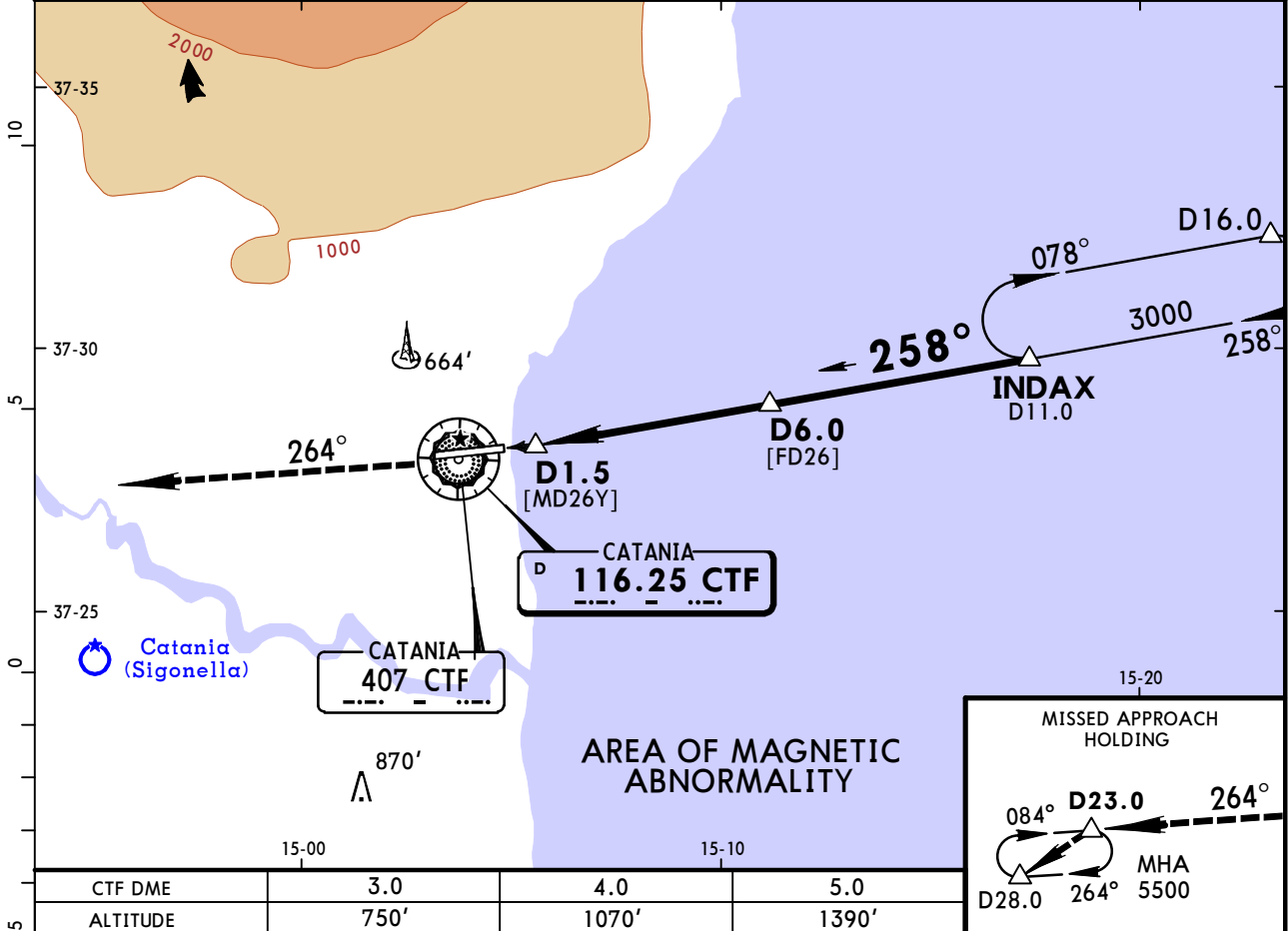
PANS OPS	Standard STRAIGHT-IN LANDING RWY 26				CIRCLE-TO-LAND			
	DA(H) 630' (612')				Not authorized North of airport			
	ALS out				Max Kts	MDA(H)	VIS	
	A	RVR 1500m			100	660' (621')	1500m	
	B	RVR 1500m			135	660' (621')	1600m	
C	CMV 2400m			180	780' (741')	2400m		
D	CMV 2400m			205	800' (761')	3600m		

LICC/CTA
FONTANAROSSA

JEPPESEN
8 APR 16 (13-4)

CATANIA, ITALY
VOR Y Rwy 26

ATIS 127.675		CATANIA Radar (APP) 119.250		CATANIA Tower 118.7		*Ground 129.725	
VOR CTF 116.25	Final Apch Crs 258°	Minimum Alt D6.0 1700' (1682')	DA(H) Refer to Minimums	Apt Elev 39'	Rwy 18'		
MISSED APCH: Climb to 5500' to VOR and proceed on R-264 to holding.							MSA CTF VOR/NDB
Alt Set: hPa		Rwy Elev: 1 hPa		Trans level: By ATC		Trans alt: 7000'	
1. DME required. 2. Mt ETNA 10880' 17.0 NM North of apt. 3. Possible existence of volcanic cloud up to 20000'.							



Gnd speed-Kts	70	90	100	120	140	160	HIALS	CTF	5500'	CTF
Descent Angle 3.00°	372	478	531	637	743	849	REIL - PAPI	116.25	↑	on 116.25
MAP at D1.5										R-264

Standard STRAIGHT-IN LANDING RWY 26				CIRCLE-TO-LAND 1			
Missed apch climb gradient mim 3.2%		Missed apch climb gradient mim 2.5%		Not authorized North of airport			
DA(H) 630' (612')		DA(H) 1250' (1232')					
ALS out		ALS out		Max Kts			
A					100	660' (621')	1500m
B	RVR 1500m				135	660' (621')	1600m
C			CMV 5000m		180	780' (741')	2400m
D	CMV 2400m				205	800' (761')	3600m
1 With missed apch climb gradient mim 2.5%: MDA(H) 1280' (1241'), VIS 5000m.							

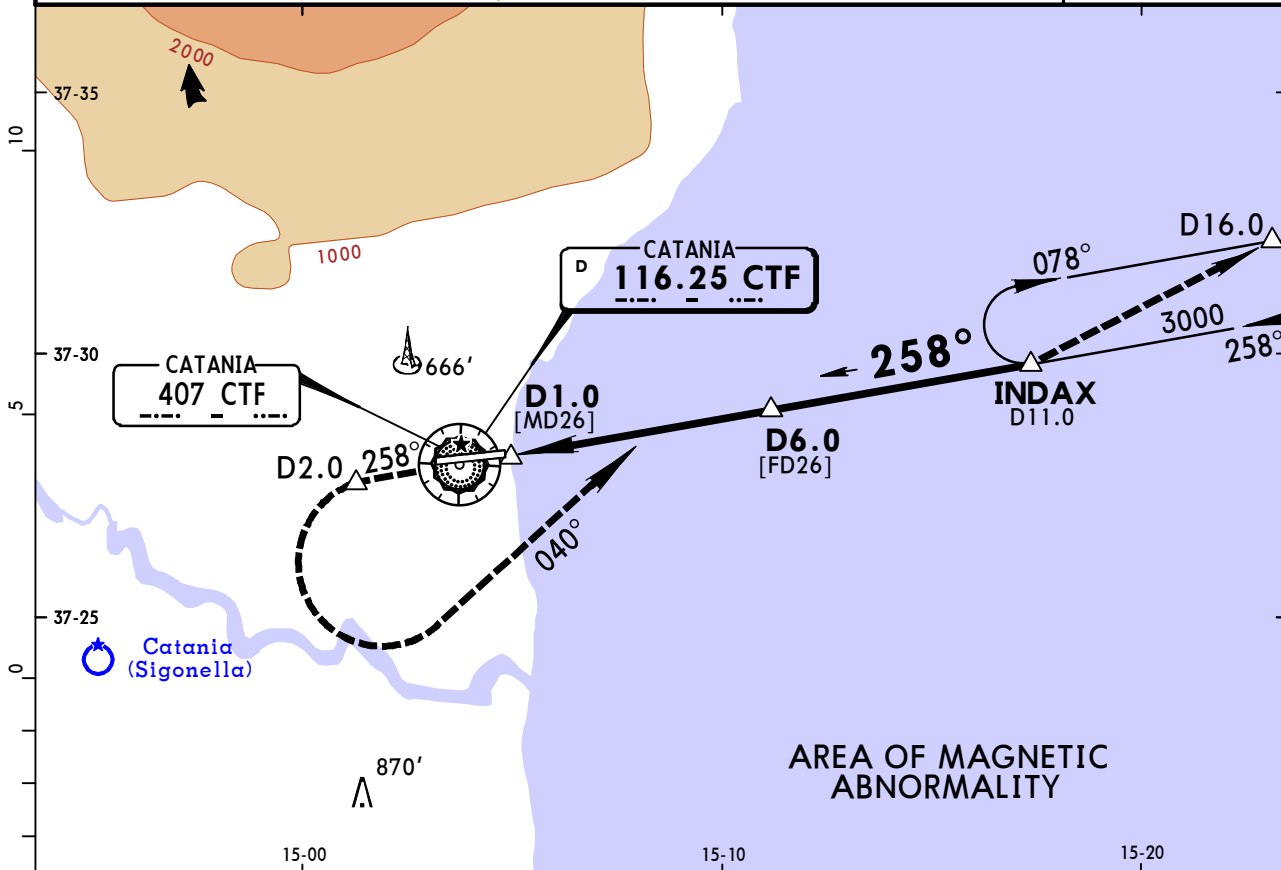
PANS OPS

LICC/CTA
FONTANAROSSA

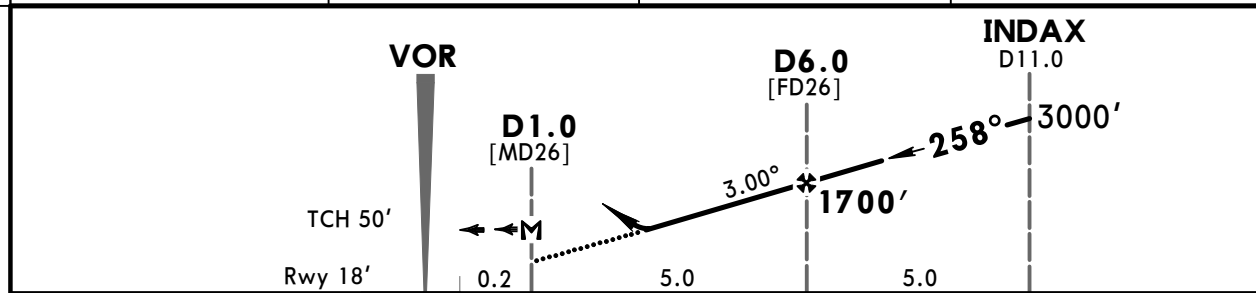
JEPPESSEN
8 APR 16 (13-5)

CATANIA, ITALY
CONTINGENCY **VOR X Rwy 26**

ATIS 127.675		CATANIA Radar (APP) 119.250		CATANIA Tower 118.7		*Ground 129.725		
VOR CTF 116.25	Final Apch Crs 258°	Minimum Alt D6.0 1700' (1682')	DA(H) 630' (612')	Apt Elev 39' Rwy 18'				
MISSED APCH: Climb to 3000' and proceed on R-258. At D2.0 turn LEFT onto 040° to join and follow R-078 to INDAX holding.							MSA CTF VOR/NDB	
Alt Set: hPa		Rwy Elev: 1 hPa		Trans level: By ATC		Trans alt: 7000'		
1. DME required. 2. Mt ETNA 10880' 17.0 NM North of apt. 3. Possible existence of volcanic cloud up to 20000'.								



CTF DME	3.0	4.0	5.0
ALTITUDE	750'	1070'	1390'



Gnd speed-Kts	70	90	100	120	140	160	HIALS REIL - PAPI PAPI - PAPI	D2.0 CTF on 116.25 R-258
Descent Angle 3.00°	372	478	531	637	743	849		
MAP at D1.0								

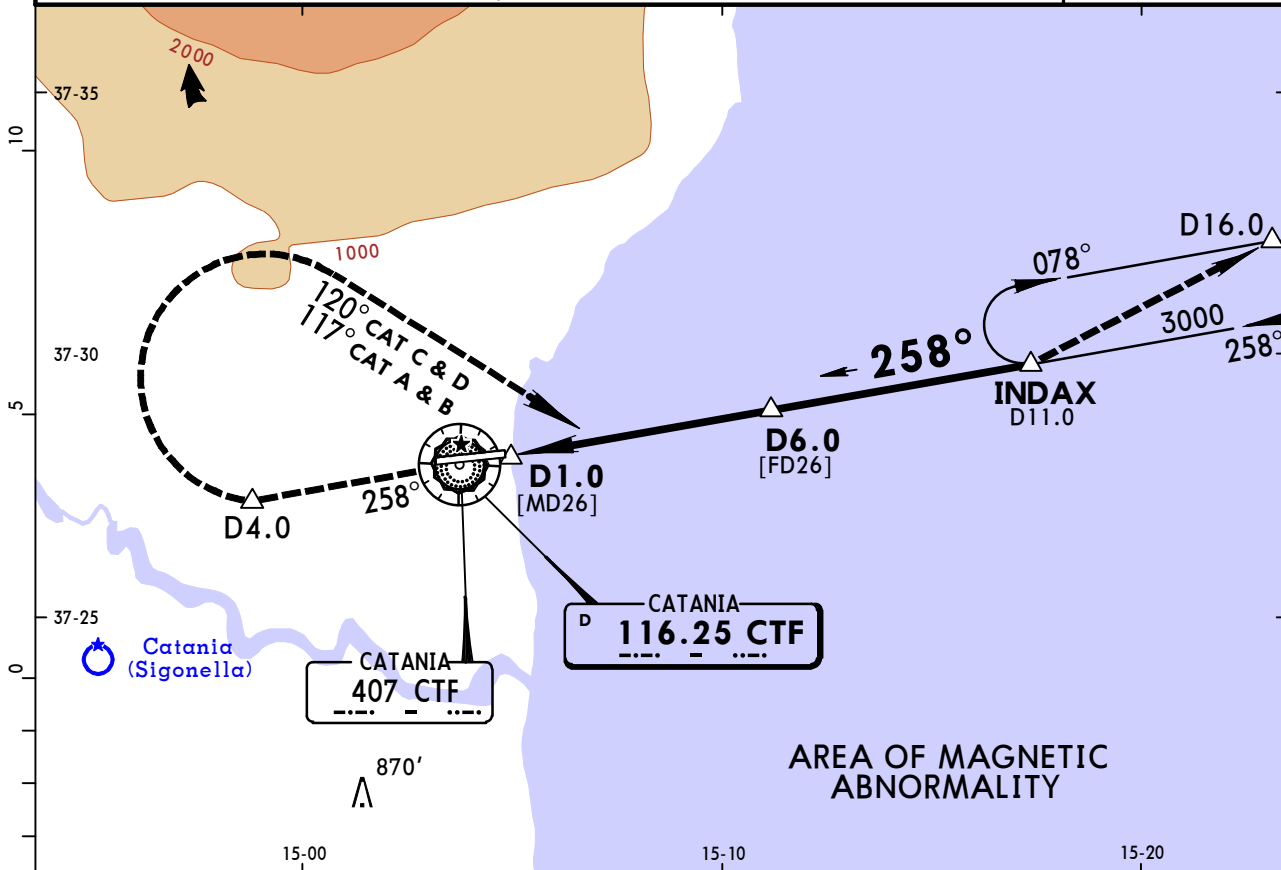
PANS OPS	Standard		STRAIGHT-IN LANDING RWY 26		CIRCLE-TO-LAND		
			DA(H) 630' (612')		Not authorized North of airport		
			RVR 1500m		Max Kts	MDA(H)	VIS
	A				100	660' (621')	1500m
	B				135	660' (621')	1600m
C		CMV 2400m		180	780' (741')	2400m	
D				205	800' (761')	3600m	

LICC/CTA
FONTANAROSSA

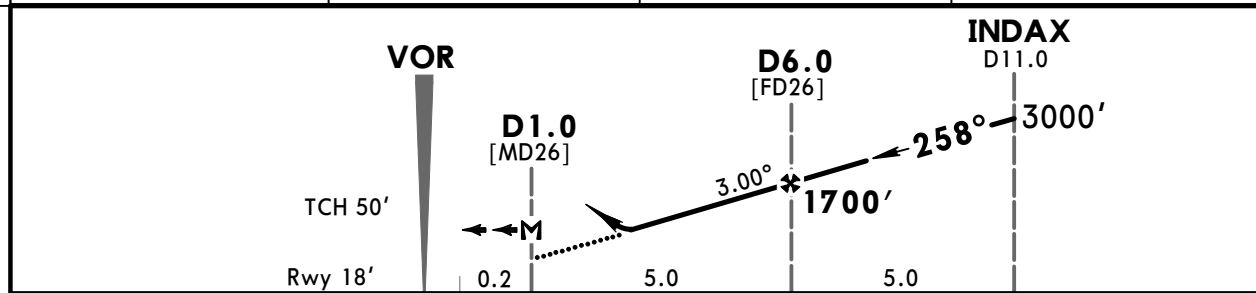
JEPPESSEN
8 APR 16 **(13-6)**

CATANIA, ITALY
VOR W Rwy 26

ATIS 127.675		CATANIA Radar (APP) 119.250		CATANIA Tower 118.7		*Ground 129.725		
VOR CTF 116.25	Final Apch Crs 258°	Minimum Alt D6.0 1700' (1682')	DA(H) 630' (612')	Apt Elev 39'	Rwy 18'			
MISSED APCH: Climb to 3000' and proceed on R-258. At D4.0 turn RIGHT (MAX 185 KT) onto 120° (CAT A & B: 117°) to join R-078 to INDAX holding.							MSA CTF VOR/NDB	
Alt Set: hPa		Rwy Elev: 1 hPa		Trans level: By ATC		Trans alt: 7000'		
1. DME required. 2. Mt ETNA 10880' 17.0 NM North of apt. 3. Possible existence of volcanic cloud up to 20000'.								



CTF DME	3.0	4.0	5.0
ALTITUDE	750'	1070'	1390'



Gnd speed-Kts	70	90	100	120	140	160	HIALS REIL - PAPI - PAPI	D4.0 CTF on 116.25 R-258
Descent Angle 3.00°	372	478	531	637	743	849		
MAP at D1.0								

PANS OPS	Standard		STRAIGHT-IN LANDING RWY 26		CIRCLE-TO-LAND	
	DA(H) 630' (612')				Not authorized North of airport	
	RVR 1500m				Max Kts	MDA(H) VIS
	A				100	660' (621') 1500m
	B				135	660' (621') 1600m
C	CMV 2400m			180	780' (741') 2400m	
D				205	800' (761') 3600m	

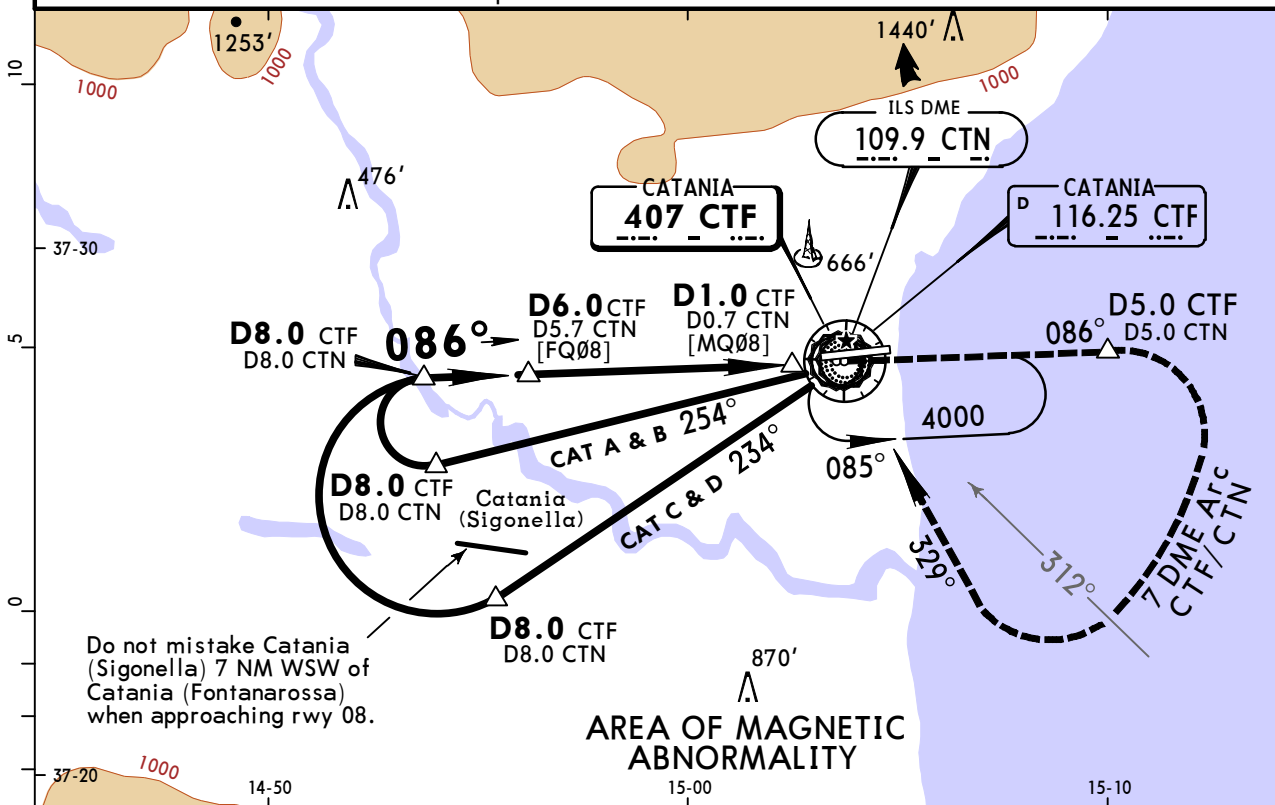
LICC/CTA
FONTANAROSSA

JEPPESEN
8 APR 16 (16-1)

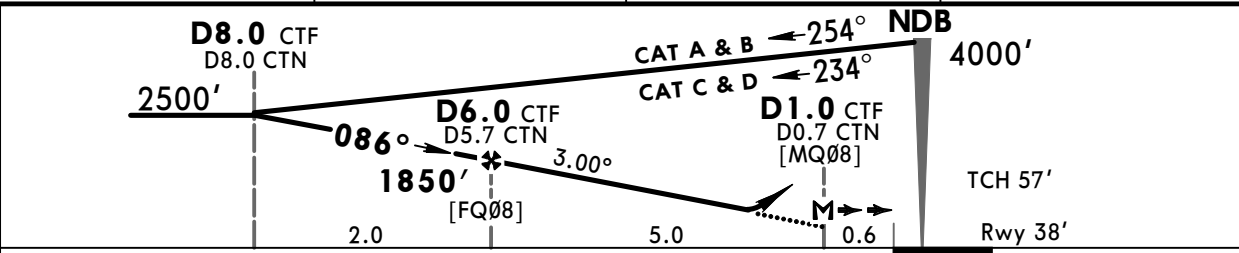
CATANIA, ITALY
NDB Rwy 08

ATIS 127.675		CATANIA Radar (APP) 119.250		CATANIA Tower 118.7		*Ground 129.725
NDB CTF 407	Final Apch Crs 086°	Minimum Alt D6.0 CTF 1850' (1812')	DA(H) 700' (662')	Apt Elev 39'	Rwy 38'	<p>MSA CTF NDB</p>
<p>MISSED APCH: Climb to 3000' and proceed on 086°. At D5.0 CTF/CTN turn RIGHT to join and follow 7 DME Arc CTF/CTN. When crossing 312° CTF NDB turn RIGHT onto 329° to NDB holding.</p>						

Alt Set: hPa Rwy Elev: 1 hPa Trans level: By ATC Trans alt: 7000'
 1. DME required. 2. Mt ETNA 10880' 17.0 NM North of apt.
 3. Possible existence of volcanic cloud up to 20000'.



CTF DME	5.0	4.0	3.0
ALTITUDE	1540'	1220'	900'



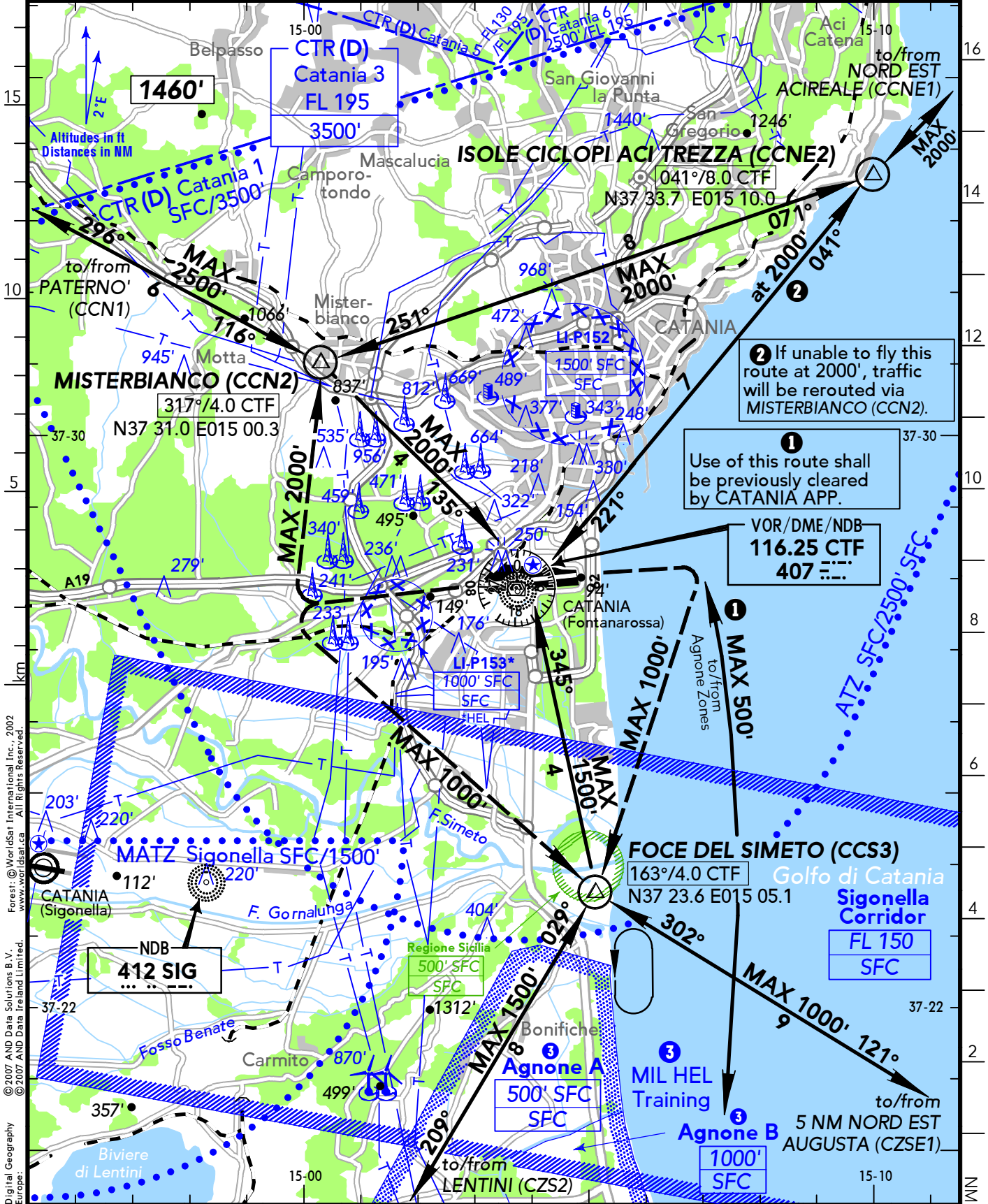
Gnd speed-Kts	70	90	100	120	140	160	HIALS REIL PAPI	D5.0 CTF/CTN on 086°	
Descent Angle	3.00°	372	478	531	637	743			849
MAP at D1.0 CTF/D0.7 CTN									

Standard STRAIGHT-IN LANDING RWY 08					CIRCLE-TO-LAND Not authorized North of airport				
DA(H) 700' (662')					Max Kts				
A	RVR 1500m				100	MDA(H) 710' (671')			1500m
B					135	710' (671')			1600m
C					180	780' (741')			2400m
D	CMV 2400m				205	800' (761')			3600m

PANS OPS

(APP)	CATANIA APPROACH (R) 119.250 (it, en)
(TWR)	CATANIA TOWER 118.700* (it, en)
GROUND	129.725

LICC	Elev 39' / 12 m	FONTANAROSSA	ITALY
N37 28.0		2.4 NM SSW Catania	
E015 03.8			
*VDF			
ATIS 127.675			
*ILS/DME freq paired.			
RWY	ILS	RWY	ILS
08*	109.90 CTN	082°	



2 If unable to fly this route at 2000', traffic will be rerouted via MISTERBIANCO (CCN2).

1 Use of this route shall be previously cleared by CATANIA APP.

VOR/DME/NDB
116.25 CTF
407

MAX 1000'

FOCE DEL SIMETO (CCS3)
163°/4.0 CTF
N37 23.6 E015 05.1

Sigonella Corridor
FL 150
SFC

MIL HEL Training
Agnone B
1000' SFC

to/from
5 NM NORD EST
AUGUSTA (CZSE1)

Forest: © Worldair International Inc., 2002
www.worldair.ca All Rights Reserved.
© 2007 AND Data Solutions B.V.
© 2007 AND Data Ireland Limited.
Digital Geography Europe.

CATANIA

19-2 01 JUL 16



FONTANAROSSA

ITALY

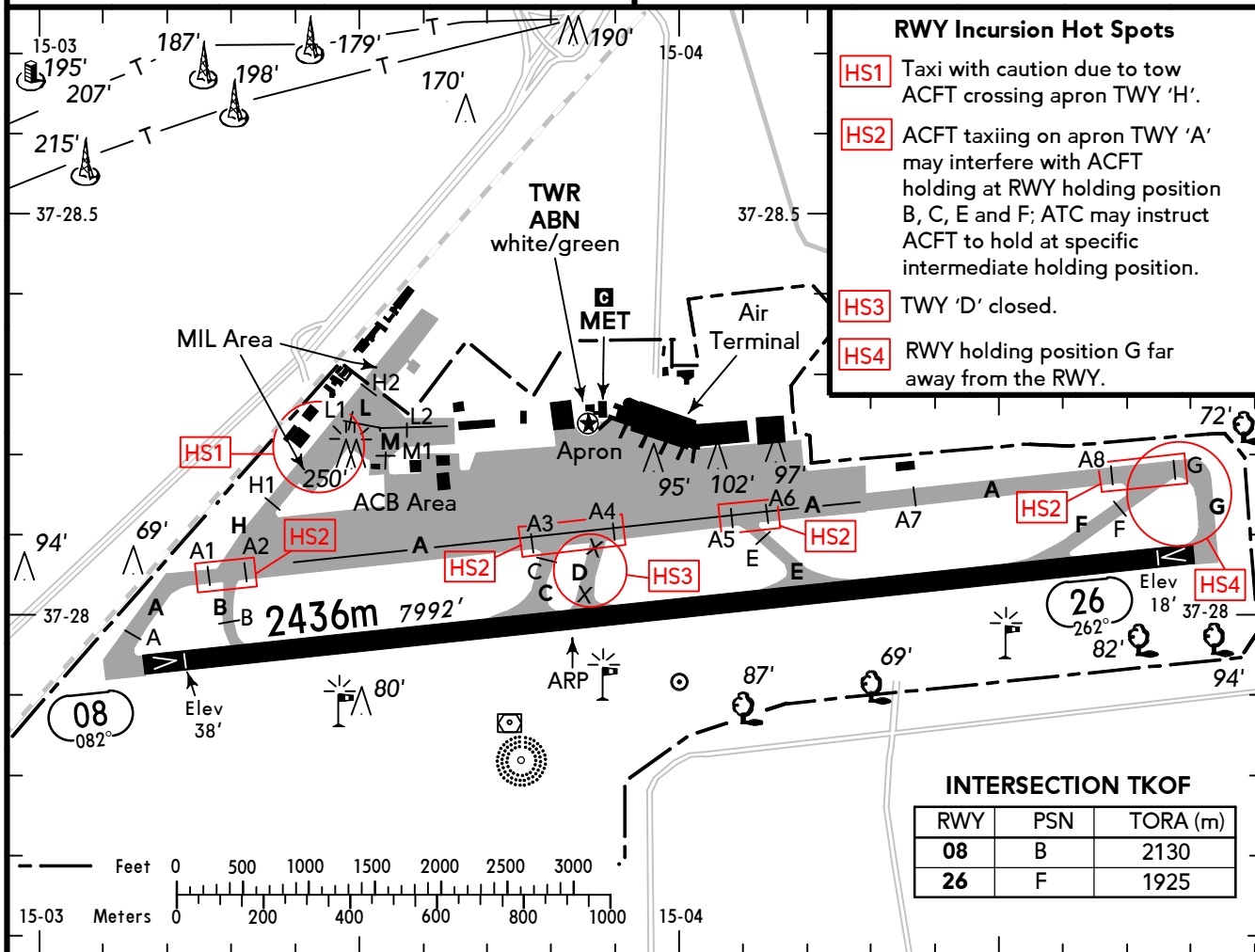
ATIS **127.675**

CATANIA GROUND **129.725**

(FIS)

ROMA INFORMATION

129.575



- RWY Incursion Hot Spots**
- HS1** Taxi with caution due to tow ACFT crossing apron TWY 'H'.
 - HS2** ACFT taxiing on apron TWY 'A' may interfere with ACFT holding at RWY holding position B, C, E and F; ATC may instruct ACFT to hold at specific intermediate holding position.
 - HS3** TWY 'D' closed.
 - HS4** RWY holding position G far away from the RWY.

INTERSECTION TKOF

RWY	PSN	TORA (m)
08	B	2130
26	F	1925



ABN - ALS - PAPI* - THRL - RL - RCLL - TWYL - APRON - WDI.

*PAPI 08: Azimuth coverage reduced to 5° left side of RCL and not usable last 600m before THR 08.
 *PAPI 26: Not usable last 450m before THR 26.

RWY No	Dimension (m) - Surface	TORA (m)	LDA (m)	Strength	Lights
08	2436 x 45 Asphalt	2436	2340	PCN 120/F/A/W/T	
26	(Heads Concrete)	2436	2350		

NOTE: See also CATANIA 10-1V and CATANIA VOLCANIC ASH CLOUD SECTORS 10-1W.

Traffic circuit S of RWY, RWY 08 RH.

At first contact with GND or TWR, ATIS code designator shall be repeated by pilot of departing ACFT to be sure that latest valid info has been received.

ATS provision not assured within 13° splay sector originated at TWR from BRG 051° to 064° due to partial limitation of TWR visibility caused by opposite building. Unless otherwise instructed by ATC, all VFR traffic using RWY 08 for operations and intending to proceed northbound, shall fly RWY heading till passing 1000' climbing before executing a left turn to join VFR exit route.

RWY closed to all operations in the event of reported wet RWY conditions associated with RWY strip flooded and cross wind component above 12 KT, EXC HEL and state ACFT.

Traffic to/from AD may be subject to delay in presence of unmanned aircraft activity. Contingency procedures will be applied on tactical basis by Catania APP.

Turn back manoeuvres are to be executed on concrete RWY heads.

Unless otherwise instructed by ATC after LGD ACFT shall vacate RWY 08 via TWY F or G and RWY 26 via TWY A or B.

CAUTION:
 Bird concentration on manoeuvring area and surrounding.